

**Electron Beam Parameters for Elekta Infinity**

<b>Nominal SSD: 100 cm</b>														
<b>Field Size: 10X10 cm<sup>2</sup></b>														
<b>Nominal Energy (MeV)</b>								7	9	10	11	13	16	20
<b>E<sub>p,o</sub> (MeV)*</b>								7.5	9.0	10.1	11.4	13.1	16.0	20.1
<b><math>\bar{E}_o</math> (MeV)**</b>								6.7	8.2	9.6	11.0	12.7	15.8	19.9
<b>Surface Dose (%)</b>								81.4	85.5	84.4	86.6	89.1	91.4	93.0
<b>Depth to Proximal 90% (cm)</b>														
<b>Depth to 100% (cm)</b>								1.5	1.9	2.2	2.5	2.9	3.4	2.4
<b>Depth to Distal 90% (cm)</b>								2.1	2.6	3.0	3.5	4.1	5.1	6.0
<b>Depth to 80% (cm)</b>								2.3	2.9	3.3	3.9	4.5	5.6	6.9
<b>Depth to 50% (cm)</b>								2.8	3.4	4.0	4.6	5.3	6.6	8.3
<b>Depth to 20% (cm)</b>								3.3	4.0	4.6	5.2	6.1	7.5	9.5
<b>Depth to 10% (cm)</b>								3.5	4.3	4.9	5.5	6.5	8.0	10.2
<b>Range R<sub>p</sub> (cm)</b>								3.5	4.2	4.9	5.6	6.5	8.0	10.1
<b>X-ray Dose (%) (R<sub>p</sub>+2 cm)</b>								1.2	1.8	1.6	2.0	2.6	3.1	4.6
<b><math>\sigma_{\theta_{max}}</math> (radians)</b>								0.062	0.054	0.048	0.042	0.038	0.030	0.025
<b>L<sub>o,eff</sub> (cm)</b>								7						
<b>*E<sub>p,o</sub> (MeV) = 0.22 + 1.98 * R<sub>p</sub> (cm) + 0.0025 R<sub>p</sub><sup>2</sup> (cm)</b>														
<b>**<math>\bar{E}_o</math> (MeV) = 2.4 * R<sub>50</sub> (cm)</b>														

**Elekta Infinity: 7 MeV Electrons**

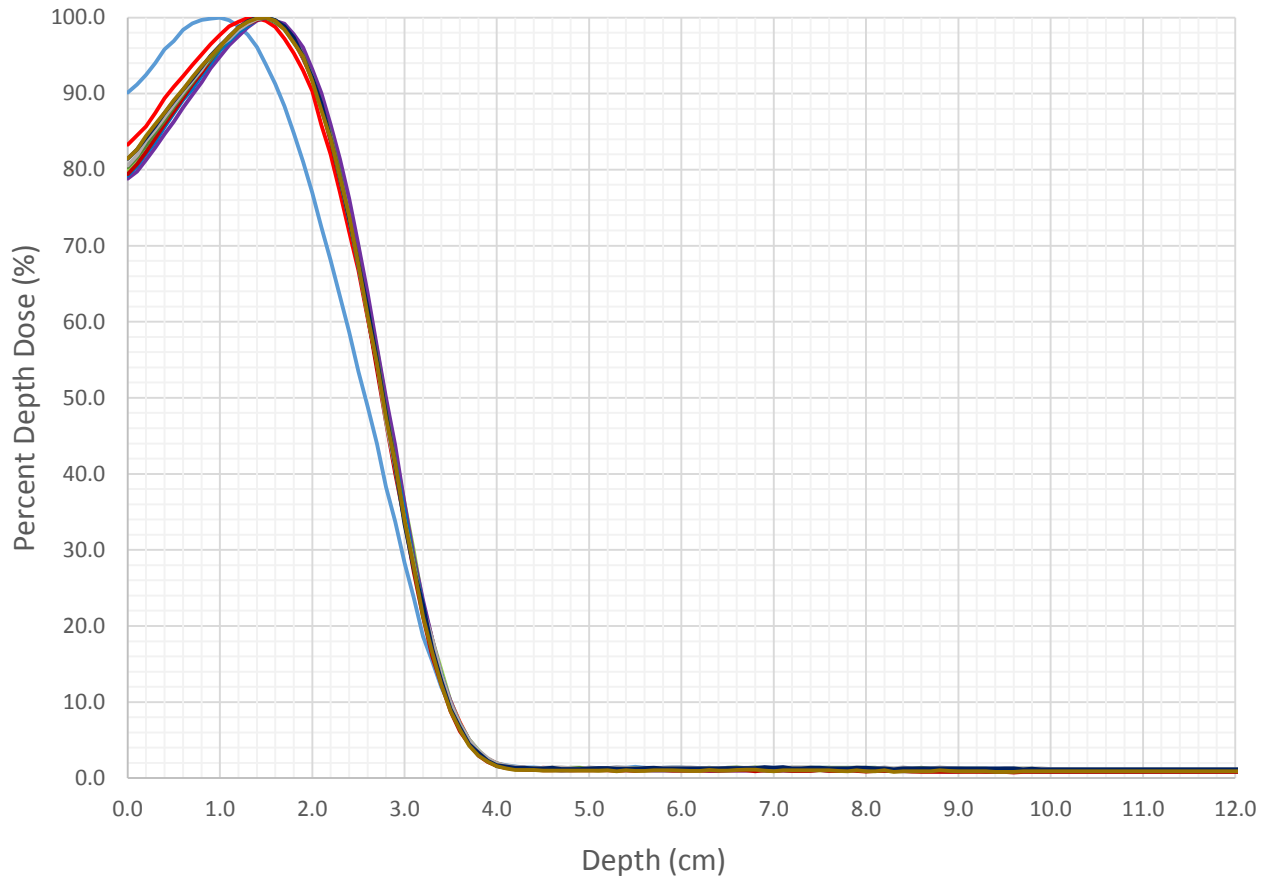
**Electron Depth Dose Table for Fixed Cone**

<b>Nominal Energy (MeV)</b>	<b>7</b>										
<b>SSD (cm)</b>	<b>100</b>										
<b>E<sub>p,o</sub> (MeV)</b>	<b>7.5</b>										
<b><math>\sigma_{\theta_z}</math> (radians)</b>	<b>0.062</b>										
<b>L<sub>o,eff</sub> (cm)</b>	<b>7</b>										
<b># Field Sizes</b>	<b>10</b>										
<b># Depths</b>	<b>122</b>										
<b>Field Size (cm)</b>		<b>2.2</b>	<b>3.2</b>	<b>4.4</b>	<b>6.2</b>	<b>6.4</b>	<b>8.6</b>	<b>10.6</b>	<b>14.8</b>	<b>21.2</b>	<b>26.4</b>
<b>Depth (cm)</b>		<b>Percent Depth Dose</b>									
0.0		90.1	83.3	80.0	78.8	79.2	79.4	80.4	80.5	81.4	81.5
0.1		91.2	84.5	81.0	79.7	80.4	80.7	81.6	81.9	82.7	82.6
0.2		92.4	85.7	82.3	81.2	82.1	82.3	83.1	83.8	84.2	84.4
0.3		94.0	87.4	84.1	82.9	83.7	84.1	84.9	85.2	85.7	86.0
0.4		95.8	89.4	85.9	84.7	85.6	86.0	86.5	86.9	87.4	87.5
0.5		96.9	90.9	87.5	86.3	87.4	87.7	88.2	88.5	89.0	89.1
0.6		98.4	92.3	89.4	88.2	89.2	89.4	89.9	90.1	90.5	90.6
0.7		99.2	93.8	91.1	89.8	90.6	91.2	91.5	91.7	92.0	92.1
0.8		99.7	95.1	92.8	91.5	92.4	92.7	93.2	93.1	93.5	93.6
0.9		99.9	96.5	94.3	93.3	93.9	94.4	94.5	95.0	95.0	94.9
1.0		100.0	97.7	95.8	94.8	95.6	96.0	96.0	96.3	96.3	96.2
1.1		99.6	98.8	97.3	96.4	96.9	97.5	97.5	97.2	97.5	97.5
1.2		98.9	99.4	98.2	97.6	98.1	98.6	98.4	98.4	98.7	98.7
1.3		97.8	99.9	99.3	98.7	98.9	99.2	99.3	99.2	99.5	99.4
1.4		96.1	99.9	99.9	99.6	99.7	99.7	99.8	99.8	100.0	99.9
1.5		93.8	99.6	100.0	99.9	100.0	100.0	100.0	100.0	100.0	100.0
1.6		91.3	98.7	99.7	99.6	99.6	99.6	99.3	99.6	99.6	99.6
1.7		88.3	97.2	98.7	99.2	98.5	98.5	98.5	98.8	98.8	98.4
1.8		84.8	95.3	97.5	97.8	97.1	96.9	96.7	97.0	97.4	96.7
1.9		81.0	93.1	95.6	96.1	94.7	94.6	95.0	94.7	94.8	94.9
2.0		76.9	90.3	92.6	93.2	92.1	91.8	92.2	92.2	92.1	91.6
2.1		72.5	85.9	89.6	90.1	88.6	88.2	88.4	88.3	88.7	87.8
2.2		68.1	82.0	84.7	85.9	84.0	83.7	84.6	84.2	84.1	84.1
2.3		63.4	77.1	80.5	81.4	78.9	78.5	79.5	78.9	78.9	79.0
2.4		58.6	71.9	74.7	76.2	73.6	73.1	73.5	73.4	73.5	73.9
2.5		53.5	66.7	69.8	70.1	67.3	67.8	67.8	67.7	67.8	67.5
2.6		48.8	60.5	62.3	63.7	60.8	60.7	61.5	60.8	61.8	60.8
2.7		43.9	54.4	56.4	56.6	54.1	53.7	55.4	54.7	55.0	54.5
2.8		38.3	48.3	49.5	50.0	47.8	46.8	48.2	46.9	48.0	47.4

2.9		33.7	41.3	42.8	43.7	41.6	40.0	41.6	40.8	41.0	41.3
3.0		28.3	34.9	36.2	36.1	35.1	33.9	34.0	33.8	33.4	33.9
3.1		23.7	28.6	29.9	29.2	28.5	27.0	28.6	27.9	27.5	27.7
3.2		18.6	22.9	22.9	23.4	22.7	21.2	21.9	22.3	22.8	21.2
3.3		15.3	18.1	18.2	18.2	17.3	15.9	17.5	18.2	17.0	16.5
3.4		12.0	13.2	14.2	13.6	13.6	12.4	13.0	13.6	12.8	12.3
3.5		9.3	10.1	10.1	10.1	9.5	8.8	9.4	9.9	9.1	8.8
3.6		6.8	7.3	7.2	7.0	7.1	6.2	6.9	7.0	6.7	6.4
3.7		4.7	5.0	5.0	5.0	5.0	4.4	4.7	5.1	4.5	4.2
3.8		3.4	3.5	3.7	3.3	3.4	3.0	3.4	3.6	3.3	3.0
3.9		2.5	2.5	2.4	2.3	2.4	2.1	2.4	2.6	2.3	2.2
4.0		1.9	1.9	2.0	1.6	1.6	1.6	1.8	2.0	1.7	1.6
4.1		1.7	1.6	1.5	1.3	1.4	1.3	1.5	1.7	1.5	1.3
4.2		1.5	1.4	1.4	1.2	1.3	1.2	1.3	1.5	1.4	1.1
4.3		1.4	1.3	1.3	1.1	1.2	1.1	1.3	1.4	1.4	1.1
4.4		1.4	1.3	1.1	1.1	1.1	1.1	1.3	1.3	1.3	1.1
4.5		1.3	1.3	1.2	1.0	1.1	1.0	1.2	1.4	1.3	1.0
4.6		1.3	1.3	1.2	1.0	1.1	1.0	1.3	1.4	1.4	1.0
4.7		1.3	1.3	1.2	1.0	1.1	1.1	1.3	1.4	1.2	1.0
4.8		1.3	1.3	1.1	1.0	1.1	1.0	1.4	1.3	1.2	1.0
4.9		1.3	1.3	1.2	1.1	1.1	1.0	1.4	1.2	1.2	1.0
5.0		1.3	1.3	1.1	1.1	1.1	1.0	1.3	1.4	1.3	1.0
5.1		1.3	1.3	1.0	1.1	1.1	1.0	1.3	1.3	1.3	1.0
5.2		1.3	1.2	1.1	1.1	1.1	1.0	1.3	1.3	1.3	1.0
5.3		1.3	1.2	1.2	1.0	1.1	1.0	1.3	1.4	1.2	0.9
5.4		1.4	1.2	1.1	1.0	1.2	1.0	1.3	1.4	1.2	1.0
5.5		1.5	1.2	1.1	1.0	1.2	1.0	1.3	1.3	1.2	0.9
5.6		1.4	1.3	1.1	1.0	1.2	1.1	1.3	1.3	1.3	0.9
5.7		1.3	1.3	1.2	1.0	1.1	1.1	1.3	1.4	1.3	1.0
5.8		1.4	1.2	1.3	1.0	1.2	1.1	1.3	1.4	1.3	1.0
5.9		1.4	1.2	1.1	1.0	1.2	1.0	1.2	1.4	1.3	1.0
6.0		1.4	1.2	1.2	1.0	1.2	1.0	1.2	1.4	1.3	1.0
6.1		1.3	1.1	1.2	1.0	1.1	1.0	1.3	1.4	1.3	1.0
6.2		1.3	1.2	1.2	1.0	1.1	1.0	1.3	1.3	1.3	1.0
6.3		1.3	1.2	1.1	0.9	1.1	1.0	1.4	1.3	1.3	1.1
6.4		1.3	1.3	1.2	0.9	1.1	1.0	1.3	1.3	1.3	1.0
6.5		1.3	1.3	1.2	1.0	1.1	1.0	1.4	1.3	1.3	1.0
6.6		1.3	1.2	1.2	1.0	1.1	1.0	1.4	1.3	1.3	1.1
6.7		1.3	1.3	1.2	1.0	1.1	1.0	1.3	1.3	1.3	1.1
6.8		1.2	1.3	1.2	1.0	1.0	0.9	1.4	1.4	1.3	1.1
6.9		1.3	1.2	1.1	1.0	1.2	1.0	1.3	1.4	1.4	1.0
7.0		1.4	1.2	1.1	1.0	1.2	0.9	1.3	1.4	1.4	0.9
7.1		1.4	1.2	1.1	1.0	1.1	1.0	1.3	1.4	1.5	1.0
7.2		1.2	1.2	1.1	1.0	1.1	1.0	1.3	1.4	1.3	1.0
7.3		1.3	1.2	1.1	0.9	1.1	0.9	1.4	1.4	1.3	1.0
7.4		1.4	1.2	1.1	1.0	1.1	0.9	1.4	1.4	1.4	1.0
7.5		1.4	1.2	1.0	1.0	1.1	1.1	1.4	1.3	1.4	1.0



# Elekta Infinity: 7 MeV Electrons Central Axis Depth Dose @ 100 cm SSD



Field Size (cm)    2.2    3.2    4.4    6.2    6.4    8.6    10.6    14.8    21.2    26.4

**Elekta Infinity: 9 MeV Electrons**

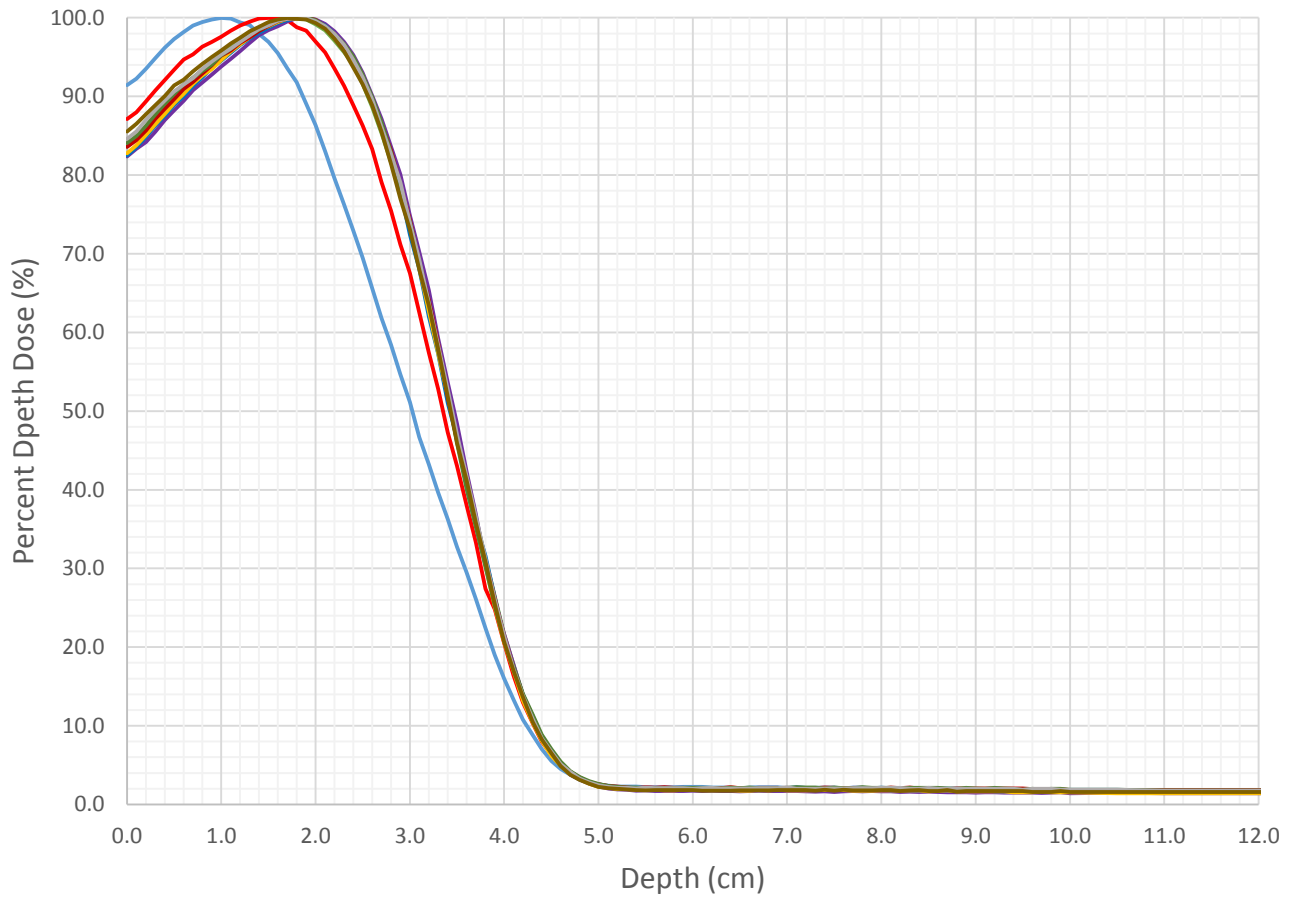
**Electron Depth Dose Table for Fixed Cone**

<b>Nominal Energy (MeV)</b>	<b>9</b>										
<b>SSD (cm)</b>	<b>100</b>										
<b>E<sub>p,o</sub> (MeV)</b>	<b>9</b>										
<b><math>\sigma_{\theta_z}</math> (radians)</b>	<b>0.054</b>										
<b>L<sub>o,eff</sub> (cm)</b>	<b>7</b>										
<b># Field Sizes</b>	<b>10</b>										
<b># Depths</b>	<b>122</b>										
<b>Field Size (cm)</b>		<b>2.2</b>	<b>3.2</b>	<b>4.4</b>	<b>6.2</b>	<b>6.4</b>	<b>8.6</b>	<b>10.6</b>	<b>14.8</b>	<b>21.2</b>	<b>26.4</b>
<b>Depth (cm)</b>		<b>Percent Depth Dose</b>									
0.0		91.4	87.1	83.6	82.4	82.5	82.8	83.6	84.1	84.6	85.5
0.1		92.2	88.0	84.6	83.3	83.5	83.8	84.4	84.9	85.5	86.5
0.2		93.5	89.4	85.9	84.2	84.8	85.1	85.7	86.3	87.0	87.7
0.3		94.8	90.7	87.4	85.5	86.3	86.4	87.1	87.7	88.3	88.9
0.4		96.2	92.1	88.7	87.0	87.5	87.8	88.4	89.1	89.5	90.0
0.5		97.3	93.4	90.3	88.2	88.9	89.1	89.7	90.3	90.6	91.4
0.6		98.2	94.7	91.3	89.4	90.0	90.3	91.0	91.5	91.5	92.1
0.7		99.0	95.3	92.4	90.8	91.3	91.6	91.9	92.3	92.3	93.2
0.8		99.5	96.3	93.3	91.8	92.4	92.7	92.9	93.2	93.5	94.1
0.9		99.8	96.9	94.3	92.8	93.6	93.5	94.0	94.0	94.5	95.0
1.0		100.0	97.6	95.4	93.8	94.5	94.6	95.2	95.2	95.3	95.8
1.1		99.9	98.3	96.3	94.8	95.5	95.7	95.8	96.0	96.1	96.7
1.2		99.4	99.0	97.3	95.8	96.5	96.6	96.8	96.9	96.9	97.5
1.3		99.1	99.5	97.9	96.8	97.3	97.5	97.5	97.8	97.7	98.3
1.4		98.0	99.9	98.7	97.8	98.1	98.5	98.3	98.5	98.6	98.8
1.5		96.9	100.0	99.1	98.4	98.7	98.9	99.0	99.1	99.0	99.4
1.6		95.5	99.9	99.7	98.9	99.3	99.4	99.6	99.6	99.6	99.8
1.7		93.5	99.7	100.0	99.5	99.7	99.9	99.9	99.9	99.9	100.0
1.8		91.8	98.8	100.0	99.9	100.0	99.9	100.0	100.0	100.0	99.8
1.9		89.0	98.3	99.8	99.9	99.8	100.0	99.9	100.0	99.9	99.8
2.0		86.4	97.0	99.2	99.8	99.5	99.5	99.7	99.7	99.6	99.3
2.1		83.0	95.6	98.4	99.2	99.0	98.7	98.8	98.9	98.9	98.6
2.2		79.6	93.6	97.1	98.3	98.0	97.8	98.0	97.9	98.0	97.3
2.3		76.3	91.3	95.6	96.9	96.5	96.2	96.4	96.7	96.5	95.7
2.4		72.9	88.9	94.1	95.2	94.2	94.2	94.8	95.0	94.7	93.7
2.5		69.5	86.3	91.6	93.0	92.2	92.0	92.4	92.8	92.4	91.5
2.6		65.6	83.3	88.6	90.1	89.1	89.3	89.4	89.9	89.6	88.9
2.7		61.8	79.1	85.3	87.2	85.8	85.7	86.5	86.7	86.1	85.5
2.8		58.4	75.4	81.6	83.6	82.1	82.3	83.1	82.8	82.6	81.4

2.9		54.7	71.2	78.1	80.1	78.0	77.8	78.7	78.5	79.1	77.0
3.0		51.1	67.5	73.5	74.8	72.4	73.6	74.3	74.0	73.9	73.1
3.1		46.7	62.5	68.2	70.2	68.1	68.3	68.8	69.1	69.3	68.0
3.2		43.2	57.4	63.5	65.4	62.0	62.7	64.0	63.8	63.7	63.5
3.3		39.7	52.8	58.1	59.3	57.3	57.4	58.6	57.7	58.4	57.9
3.4		36.3	47.3	51.9	53.7	51.0	51.9	51.8	52.5	52.8	51.8
3.5		32.8	43.0	47.4	48.4	46.5	46.3	46.4	46.0	47.0	46.0
3.6		29.5	38.0	41.3	42.3	40.9	40.8	41.6	40.1	41.7	41.2
3.7		26.1	33.3	36.5	36.9	35.6	35.8	36.2	35.2	36.6	35.8
3.8		22.4	27.4	31.2	30.4	31.6	30.3	31.0	30.2	31.2	30.9
3.9		19.0	24.8	26.5	25.7	26.3	25.1	26.2	25.2	26.1	25.5
4.0		16.0	20.5	21.7	21.7	21.4	20.6	21.4	20.9	21.5	20.7
4.1		13.3	16.3	17.7	17.7	17.0	16.9	17.3	17.5	17.2	16.9
4.2		10.8	13.0	13.9	13.9	13.8	13.2	13.9	14.1	13.8	13.7
4.3		8.9	10.4	11.2	11.3	10.9	10.5	11.0	11.5	11.0	10.5
4.4		7.0	8.0	8.7	8.2	8.3	8.1	8.5	8.9	8.4	8.3
4.5		5.5	6.3	6.8	6.4	6.5	6.2	6.7	7.0	6.7	6.5
4.6		4.5	5.1	5.3	5.1	4.9	4.9	5.3	5.4	5.1	4.9
4.7		3.8	4.1	4.2	3.8	4.0	3.8	4.2	4.2	4.2	3.8
4.8		3.2	3.4	3.3	3.2	3.2	3.2	3.4	3.5	3.3	3.1
4.9		2.8	2.9	2.8	2.6	2.7	2.6	2.8	3.0	2.8	2.6
5.0		2.5	2.6	2.5	2.3	2.4	2.2	2.6	2.6	2.4	2.2
5.1		2.4	2.3	2.3	2.0	2.1	2.1	2.4	2.4	2.3	2.1
5.2		2.3	2.2	2.1	1.9	2.1	2.0	2.3	2.2	2.1	2.0
5.3		2.3	2.1	2.1	1.9	2.0	2.0	2.2	2.2	2.1	1.9
5.4		2.3	2.1	2.0	1.7	2.0	1.9	2.1	2.2	2.0	1.8
5.5		2.2	2.1	2.0	1.8	2.0	1.9	2.2	2.1	2.1	1.8
5.6		2.2	2.1	2.0	1.7	2.0	1.9	2.1	2.1	2.1	1.8
5.7		2.2	2.1	2.0	1.7	2.0	1.8	2.2	2.1	2.1	1.8
5.8		2.2	2.0	2.0	1.7	1.9	1.8	2.1	2.1	2.1	1.8
5.9		2.2	2.0	2.0	1.7	1.9	1.9	2.1	2.1	2.1	1.8
6.0		2.2	2.0	2.0	1.7	1.9	1.8	2.0	2.1	2.0	1.8
6.1		2.2	2.0	2.0	1.7	1.9	1.8	2.0	2.1	2.1	1.8
6.2		2.1	2.0	2.1	1.7	1.9	1.8	2.0	2.1	2.1	1.7
6.3		2.1	2.1	2.1	1.7	1.9	1.8	2.1	2.0	2.0	1.8
6.4		2.1	2.2	2.0	1.7	1.9	1.8	2.1	2.1	2.0	1.8
6.5		2.0	2.1	2.1	1.7	2.0	1.7	2.1	2.1	2.0	1.8
6.6		2.2	2.1	2.0	1.7	2.0	1.7	2.1	2.2	2.0	1.8
6.7		2.2	2.0	2.0	1.7	2.0	1.9	2.1	2.1	2.1	1.8
6.8		2.2	2.0	2.0	1.7	1.9	1.8	2.1	2.1	2.1	1.8
6.9		2.2	2.0	2.0	1.7	1.9	1.9	2.1	2.1	2.1	1.8
7.0		2.1	2.0	2.0	1.7	1.9	1.8	2.0	2.1	2.2	1.8
7.1		2.2	2.0	1.9	1.7	1.9	1.8	2.1	2.2	2.0	1.8
7.2		2.1	2.0	1.9	1.7	1.9	1.8	2.1	2.1	2.0	1.8
7.3		2.1	2.0	2.0	1.6	1.9	1.8	2.1	2.1	2.0	1.7
7.4		2.1	2.1	2.1	1.7	1.8	1.8	2.2	2.0	2.0	1.9
7.5		2.2	2.0	2.0	1.6	1.8	1.8	2.1	2.1	2.0	1.8



# Elekta Infinity: 9 MeV Electrons Central Axis Depth Dose @ 100 cm SSD



Field Size (cm)    2.2    3.2    4.4    6.2    8.6    10.6    14.8    10.6    21.2    26.4

**Elekta Infinity: 10 MeV Electrons**

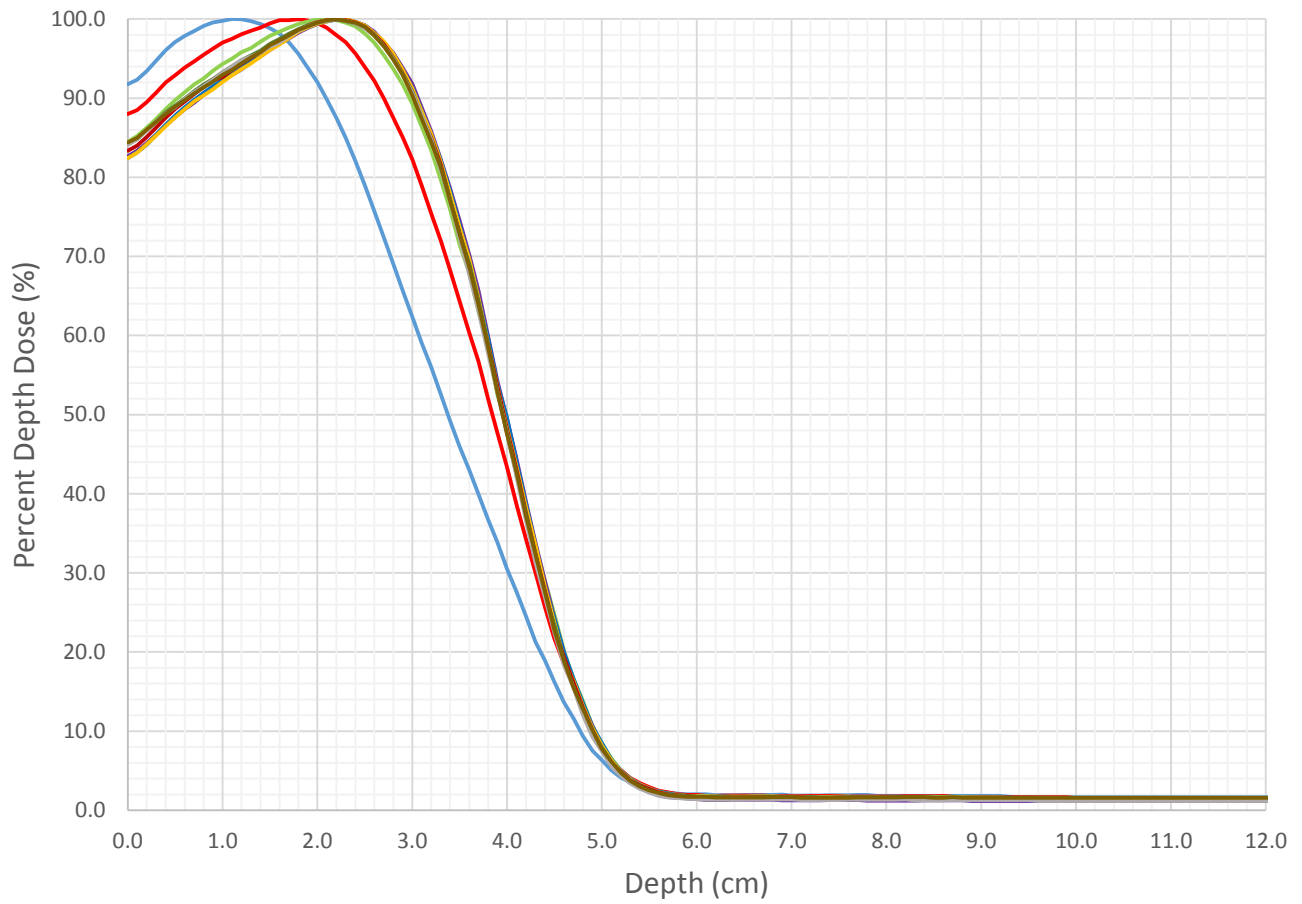
**Electron Depth Dose Table for Fixed Cone**

<b>Nominal Energy (MeV)</b>	<b>10</b>										
<b>SSD (cm)</b>	<b>100</b>										
<b>E<sub>p,o</sub> (MeV)</b>	<b>10.1</b>										
<b><math>\sigma_{\theta_z}</math> (radians)</b>	<b>0.048</b>										
<b>L<sub>o,eff</sub> (cm)</b>	<b>7</b>										
<b># Field Sizes</b>	<b>10</b>										
<b># Depths</b>	<b>122</b>										
<b>Field Size (cm)</b>		<b>2.2</b>	<b>3.2</b>	<b>4.4</b>	<b>6.2</b>	<b>6.4</b>	<b>8.6</b>	<b>10.6</b>	<b>14.8</b>	<b>21.2</b>	<b>26.4</b>
<b>Depth (cm)</b>		<b>Percent Depth Dose</b>									
0.0		91.8	88.0	84.5	82.6	82.4	82.4	83.4	84.2	84.1	84.4
0.1		92.3	88.5	85.2	83.4	83.2	83.1	84.0	84.8	84.8	85.0
0.2		93.4	89.5	86.3	84.3	84.1	84.2	85.1	86.0	85.9	86.0
0.3		94.7	90.7	87.4	85.4	85.4	85.3	86.3	87.1	87.0	87.0
0.4		96.0	92.0	88.6	86.6	86.6	86.4	87.5	88.2	88.0	88.0
0.5		97.1	92.9	89.7	87.6	87.8	87.5	88.7	89.1	88.8	88.9
0.6		97.9	93.9	90.7	88.6	88.9	88.6	89.6	90.0	89.8	89.7
0.7		98.5	94.6	91.7	89.4	89.8	89.6	90.5	90.9	90.8	90.6
0.8		99.1	95.5	92.5	90.4	90.7	90.3	91.4	91.7	91.5	91.4
0.9		99.6	96.2	93.5	91.3	91.5	91.1	92.2	92.4	92.3	92.1
1.0		99.8	97.0	94.3	92.2	92.3	92.1	92.7	93.3	93.2	92.9
1.1		100.0	97.5	95.0	92.9	93.1	92.9	93.6	94.0	94.0	93.6
1.2		100.0	98.1	95.8	93.6	94.0	93.7	94.4	94.8	94.8	94.4
1.3		99.7	98.5	96.3	94.6	94.7	94.4	95.1	95.4	95.3	95.2
1.4		99.4	98.9	97.2	95.3	95.5	95.2	95.8	96.0	95.7	95.8
1.5		98.9	99.5	97.9	96.1	96.3	96.1	96.7	96.9	96.5	96.7
1.6		98.1	99.9	98.4	96.9	97.1	96.8	97.4	97.4	97.0	97.3
1.7		97.0	99.9	98.9	97.5	97.8	97.6	98.0	98.2	97.9	97.9
1.8		95.6	100.0	99.4	98.3	98.4	98.4	98.6	98.7	98.5	98.6
1.9		93.8	99.8	99.7	98.9	98.9	99.0	99.2	99.2	99.1	99.1
2.0		92.0	99.5	99.9	99.4	99.4	99.4	99.6	99.5	99.5	99.5
2.1		89.8	98.9	100.0	99.8	99.7	99.7	99.9	99.8	99.8	99.9
2.2		87.5	98.0	99.8	99.9	99.9	100.0	100.0	100.0	100.0	100.0
2.3		85.0	97.1	99.5	100.0	100.0	100.0	99.9	99.7	99.8	99.8
2.4		82.1	95.7	99.1	99.6	99.5	99.7	99.6	99.4	99.5	99.5
2.5		78.9	93.9	98.2	99.2	99.2	99.2	99.0	98.9	98.8	99.0
2.6		75.8	92.2	97.0	98.4	98.2	98.2	98.1	98.0	97.9	97.9
2.7		72.4	90.0	95.4	97.1	97.0	97.2	96.8	96.6	96.6	96.6
2.8		69.0	87.5	93.6	95.7	95.5	95.6	95.1	95.0	94.9	94.8

2.9		65.7	85.0	91.7	93.8	93.5	93.6	93.1	93.1	92.9	92.9
3.0		62.4	82.3	89.3	91.8	91.3	91.2	90.7	90.8	90.7	90.4
3.1		59.1	79.0	86.4	88.8	88.4	88.4	87.7	87.8	87.8	87.4
3.2		56.0	75.4	83.4	85.8	85.4	85.5	85.0	84.8	84.8	84.5
3.3		52.6	72.0	79.7	82.2	82.2	81.9	81.6	81.3	80.9	81.2
3.4		49.2	68.3	76.0	78.6	78.3	78.0	77.1	77.2	77.1	77.1
3.5		46.0	64.3	71.5	74.5	74.0	73.7	72.9	72.7	72.3	72.8
3.6		43.0	60.4	67.9	70.2	69.5	69.7	68.7	69.0	67.7	68.6
3.7		39.9	56.7	63.0	65.6	64.5	64.6	64.1	64.3	63.1	63.9
3.8		36.7	52.0	58.4	59.8	59.6	58.9	58.8	58.7	57.7	58.5
3.9		33.9	47.7	52.5	54.2	53.9	53.6	53.5	52.9	52.9	52.9
4.0		30.5	43.3	48.6	49.4	49.6	48.4	48.2	47.8	47.6	47.5
4.1		27.6	38.6	43.9	44.4	44.0	43.3	42.9	42.3	42.1	42.7
4.2		24.5	34.3	38.8	39.0	38.7	38.3	37.6	37.5	36.7	37.2
4.3		21.3	30.0	33.6	33.8	33.5	33.5	32.3	32.2	31.3	32.3
4.4		18.9	25.6	28.9	28.8	28.0	28.1	27.6	27.1	26.8	27.5
4.5		16.2	21.7	24.7	24.3	24.2	23.7	23.0	23.4	22.4	22.8
4.6		13.6	18.5	20.1	19.9	19.9	19.1	19.3	18.9	18.3	18.9
4.7		11.6	15.6	16.6	16.3	16.6	16.3	16.1	15.6	15.4	15.5
4.8		9.4	12.5	13.8	13.4	13.6	13.2	13.0	12.3	12.1	12.8
4.9		7.5	10.0	10.7	10.7	10.5	10.4	10.1	9.9	9.2	10.1
5.0		6.4	8.0	8.4	8.2	8.5	8.2	7.8	7.9	7.5	7.8
5.1		5.1	6.2	6.6	6.3	6.4	6.4	6.0	6.1	5.5	6.2
5.2		4.1	5.1	5.0	4.7	5.0	4.9	4.9	4.7	4.4	4.7
5.3		3.5	4.1	4.0	3.8	4.0	3.9	3.8	3.7	3.4	3.7
5.4		3.0	3.5	3.3	3.0	3.1	3.1	3.1	3.0	2.7	3.0
5.5		2.7	2.9	2.7	2.3	2.7	2.7	2.7	2.5	2.2	2.5
5.6		2.3	2.5	2.3	1.9	2.4	2.3	2.3	2.1	1.8	2.2
5.7		2.2	2.3	2.1	1.6	2.1	2.0	2.0	1.9	1.6	1.9
5.8		2.1	2.0	1.9	1.6	1.9	1.9	1.9	1.9	1.5	1.8
5.9		2.0	1.9	1.8	1.5	1.8	1.8	1.8	1.8	1.4	1.7
6.0		2.0	1.9	1.8	1.4	1.7	1.7	1.7	1.7	1.4	1.7
6.1		2.0	1.8	1.8	1.3	1.7	1.7	1.7	1.7	1.3	1.7
6.2		1.9	1.8	1.7	1.3	1.7	1.7	1.6	1.7	1.3	1.6
6.3		1.9	1.8	1.7	1.3	1.7	1.6	1.6	1.6	1.3	1.6
6.4		1.9	1.9	1.7	1.3	1.6	1.6	1.6	1.6	1.4	1.6
6.5		1.9	1.9	1.8	1.3	1.6	1.6	1.6	1.6	1.4	1.6
6.6		1.9	1.9	1.8	1.3	1.6	1.7	1.6	1.6	1.4	1.6
6.7		1.9	1.9	1.8	1.3	1.7	1.7	1.6	1.6	1.4	1.6
6.8		2.0	1.8	1.8	1.3	1.7	1.7	1.7	1.6	1.4	1.6
6.9		2.0	1.8	1.7	1.2	1.7	1.7	1.7	1.6	1.4	1.7
7.0		1.9	1.8	1.7	1.3	1.7	1.7	1.7	1.7	1.4	1.7
7.1		1.9	1.8	1.7	1.3	1.7	1.7	1.7	1.6	1.3	1.6
7.2		1.9	1.8	1.7	1.3	1.7	1.6	1.6	1.7	1.3	1.6
7.3		1.9	1.8	1.7	1.3	1.6	1.6	1.6	1.6	1.3	1.6
7.4		1.9	1.8	1.7	1.3	1.6	1.6	1.6	1.6	1.3	1.6
7.5		1.9	1.8	1.7	1.3	1.6	1.6	1.6	1.6	1.3	1.6



# Elekta Infinity: 10 MeV Electrons Central Axis Depth Dose @ 100 cm SSD



Field Size (cm)    2.2    3.2    4.4    6.2    6.4    8.6    10.6    14.8    21.2    26.4

**Elekta Infinity: 11 MeV Electrons**

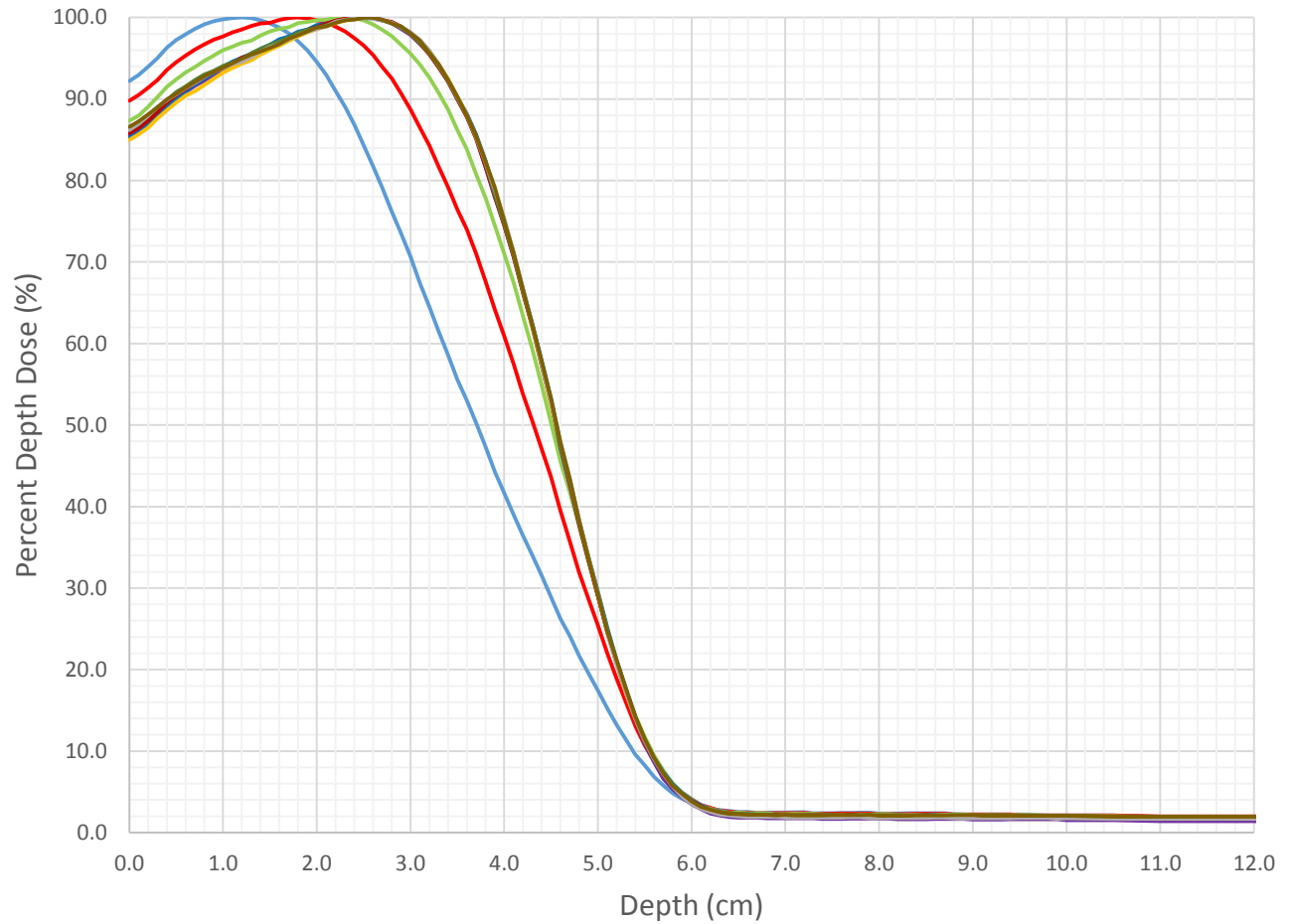
**Electron Depth Dose Table for Fixed Cone**

<b>Nominal Energy (MeV)</b>	<b>11</b>										
<b>SSD (cm)</b>	<b>100</b>										
<b>E<sub>p,o</sub> (MeV)</b>	<b>11.4</b>										
<b><math>\sigma_{\theta_z}</math> (radians)</b>	<b>0.042</b>										
<b>L<sub>o,eff</sub> (cm)</b>	<b>7</b>										
<b># Field Sizes</b>	<b>10</b>										
<b># Depths</b>	<b>122</b>										
<b>Field Size (cm)</b>		<b>2.2</b>	<b>3.2</b>	<b>4.4</b>	<b>6.2</b>	<b>6.4</b>	<b>8.6</b>	<b>10.6</b>	<b>14.8</b>	<b>21.2</b>	<b>26.4</b>
<b>Depth (cm)</b>		<b>Percent Depth Dose</b>									
0.0		92.2	89.8	87.3	85.5	85.2	85.0	85.8	86.2	86.2	86.6
0.1		93.0	90.5	88.0	86.0	85.9	85.7	86.4	86.9	87.0	87.3
0.2		94.0	91.4	89.1	86.8	86.9	86.5	87.3	87.9	88.0	88.1
0.3		95.0	92.3	90.2	87.9	88.1	87.6	88.4	89.0	89.0	89.0
0.4		96.3	93.6	91.5	89.1	89.1	88.6	89.6	89.9	89.9	90.0
0.5		97.2	94.5	92.4	90.1	90.0	89.6	90.5	90.8	90.6	90.7
0.6		97.9	95.3	93.3	90.9	91.0	90.4	91.2	91.6	91.4	91.4
0.7		98.6	96.1	93.9	91.6	91.8	91.0	92.0	92.3	92.0	92.1
0.8		99.2	96.7	94.7	92.3	92.5	91.7	92.7	93.0	92.7	92.8
0.9		99.5	97.3	95.3	93.0	93.2	92.5	93.3	93.5	93.3	93.4
1.0		99.8	97.7	96.0	93.5	93.9	93.2	93.8	94.1	93.8	93.9
1.1		99.9	98.2	96.4	94.1	94.6	93.8	94.4	94.5	94.3	94.4
1.2		100.0	98.5	96.9	94.8	95.0	94.3	95.0	94.9	94.5	94.9
1.3		99.9	99.0	97.2	95.4	95.6	94.8	95.5	95.6	95.1	95.4
1.4		99.7	99.3	97.8	95.9	96.1	95.4	96.0	96.1	95.8	95.9
1.5		99.3	99.4	98.3	96.4	96.7	96.0	96.5	96.7	96.4	96.3
1.6		98.8	99.7	98.6	96.8	97.3	96.5	97.0	97.1	96.7	96.7
1.7		98.0	100.0	98.8	97.4	97.7	97.1	97.5	97.6	97.3	97.4
1.8		97.1	100.0	99.3	98.0	98.2	97.7	97.9	98.1	97.8	97.8
1.9		95.9	99.9	99.5	98.5	98.5	98.2	98.5	98.5	98.2	98.3
2.0		94.6	99.7	99.7	98.9	99.1	98.6	98.8	98.7	98.6	98.8
2.1		92.9	99.5	99.7	99.2	99.2	98.9	99.2	99.0	98.9	98.9
2.2		91.0	98.9	100.0	99.6	99.6	99.3	99.6	99.4	99.5	99.4
2.3		89.1	98.3	100.0	99.7	99.8	99.6	99.9	99.7	99.7	99.7
2.4		86.9	97.5	99.9	99.9	100.0	99.9	99.9	99.9	99.9	99.7
2.5		84.4	96.6	99.6	100.0	100.0	100.0	100.0	100.0	100.0	100.0
2.6		81.8	95.4	99.2	100.0	99.9	99.9	100.0	99.9	99.8	100.0
2.7		79.1	93.9	98.5	99.7	99.7	99.7	99.7	99.7	99.6	99.7
2.8		76.2	92.5	97.7	99.3	99.3	99.4	99.5	99.3	99.4	99.3

2.9		73.5	90.7	96.6	98.6	98.9	98.9	98.9	98.7	98.8	98.9
3.0		70.6	88.7	95.6	97.9	98.1	98.0	98.0	98.0	98.2	98.1
3.1		67.4	86.5	94.3	96.8	97.0	97.1	96.8	96.9	97.3	97.2
3.2		64.5	84.3	92.6	95.6	95.7	95.8	95.5	95.6	96.0	95.7
3.3		61.5	81.7	90.8	94.0	94.1	94.3	93.9	94.0	94.3	94.3
3.4		58.6	79.2	88.7	92.2	92.3	92.5	92.1	92.2	92.4	92.3
3.5		55.6	76.5	86.2	90.0	90.1	90.3	90.0	90.1	90.2	90.3
3.6		53.0	74.0	83.8	87.9	88.2	88.0	87.8	88.0	88.0	88.0
3.7		50.3	71.0	80.8	85.1	85.6	85.1	85.2	85.4	85.4	85.5
3.8		47.3	67.6	77.8	81.7	82.4	82.1	81.7	82.1	82.2	82.3
3.9		44.3	64.2	74.5	77.9	78.6	78.5	78.1	78.3	78.9	79.2
4.0		41.7	61.0	71.1	74.7	75.2	75.0	74.6	74.7	75.4	75.1
4.1		39.0	57.5	67.5	70.7	70.9	70.9	70.6	70.8	71.2	71.1
4.2		36.5	53.8	63.4	66.5	66.8	66.4	66.3	66.4	66.8	66.7
4.3		34.0	50.5	59.3	62.2	62.4	61.8	62.1	62.2	62.2	62.3
4.4		31.6	47.1	54.9	57.6	57.9	57.3	57.3	57.7	57.4	57.8
4.5		28.9	43.6	50.2	52.7	53.2	52.2	52.8	52.8	52.6	53.2
4.6		26.3	39.5	45.6	47.2	47.8	47.7	47.6	47.4	48.1	47.8
4.7		24.1	35.7	41.7	42.6	43.2	43.0	42.8	43.0	43.4	43.3
4.8		21.7	31.9	37.6	37.8	38.3	38.1	37.9	38.0	38.3	38.2
4.9		19.5	28.6	33.1	33.4	33.8	33.6	33.3	33.6	33.7	33.5
5.0		17.4	25.4	29.1	29.1	29.6	29.1	29.1	29.3	29.4	29.3
5.1		15.2	22.0	24.6	24.7	25.1	24.6	24.5	24.8	24.5	24.6
5.2		13.2	18.9	20.9	20.8	21.1	20.7	20.8	20.9	20.6	21.1
5.3		11.3	15.9	17.4	17.2	17.6	17.0	17.3	17.2	17.1	17.6
5.4		9.6	13.1	14.3	13.8	14.2	13.9	14.1	13.9	14.0	14.2
5.5		8.3	10.7	11.8	10.9	11.4	11.2	11.2	11.3	11.3	11.5
5.6		6.8	8.7	9.4	8.6	9.1	9.0	9.1	9.0	9.0	9.1
5.7		5.8	7.2	7.6	6.6	7.4	7.2	7.1	7.2	7.1	7.3
5.8		4.8	5.8	6.0	5.3	5.9	5.7	5.7	5.8	5.6	5.7
5.9		4.1	4.9	4.9	4.3	4.8	4.7	4.7	4.7	4.4	4.8
6.0		3.6	4.1	4.0	3.5	4.0	3.7	3.9	3.7	3.5	3.8
6.1		3.2	3.4	3.4	2.9	3.4	3.1	3.2	3.2	2.9	3.2
6.2		2.9	3.0	2.9	2.3	2.8	2.8	2.7	2.8	2.5	2.8
6.3		2.8	2.7	2.7	2.1	2.6	2.5	2.5	2.5	2.2	2.5
6.4		2.7	2.6	2.5	1.9	2.4	2.4	2.4	2.4	2.1	2.3
6.5		2.5	2.5	2.5	1.8	2.3	2.3	2.3	2.3	2.0	2.3
6.6		2.5	2.5	2.4	1.8	2.3	2.2	2.2	2.2	1.9	2.2
6.7		2.4	2.4	2.4	1.8	2.2	2.2	2.2	2.2	1.9	2.2
6.8		2.4	2.4	2.4	1.7	2.2	2.2	2.2	2.2	1.9	2.2
6.9		2.5	2.4	2.3	1.7	2.2	2.2	2.2	2.1	1.9	2.1
7.0		2.5	2.4	2.3	1.8	2.2	2.2	2.1	2.1	1.8	2.2
7.1		2.5	2.4	2.3	1.8	2.1	2.1	2.1	2.1	1.8	2.1
7.2		2.5	2.4	2.3	1.8	2.1	2.1	2.1	2.1	1.8	2.1
7.3		2.4	2.3	2.3	1.8	2.1	2.2	2.1	2.2	1.8	2.1
7.4		2.4	2.3	2.2	1.7	2.2	2.2	2.1	2.2	1.8	2.1
7.5		2.4	2.3	2.2	1.7	2.2	2.2	2.2	2.2	1.8	2.1



# Elekta Infinity: 11 MeV Electrons Central Axis Depth Dose @ 100 cm SSD



Field Size (cm)    2.2    3.2    4.4    6.2    6.4    8.6    10.6    14.8    21.2    26.4

**Elekta Infinity: 13 MeV Electrons**

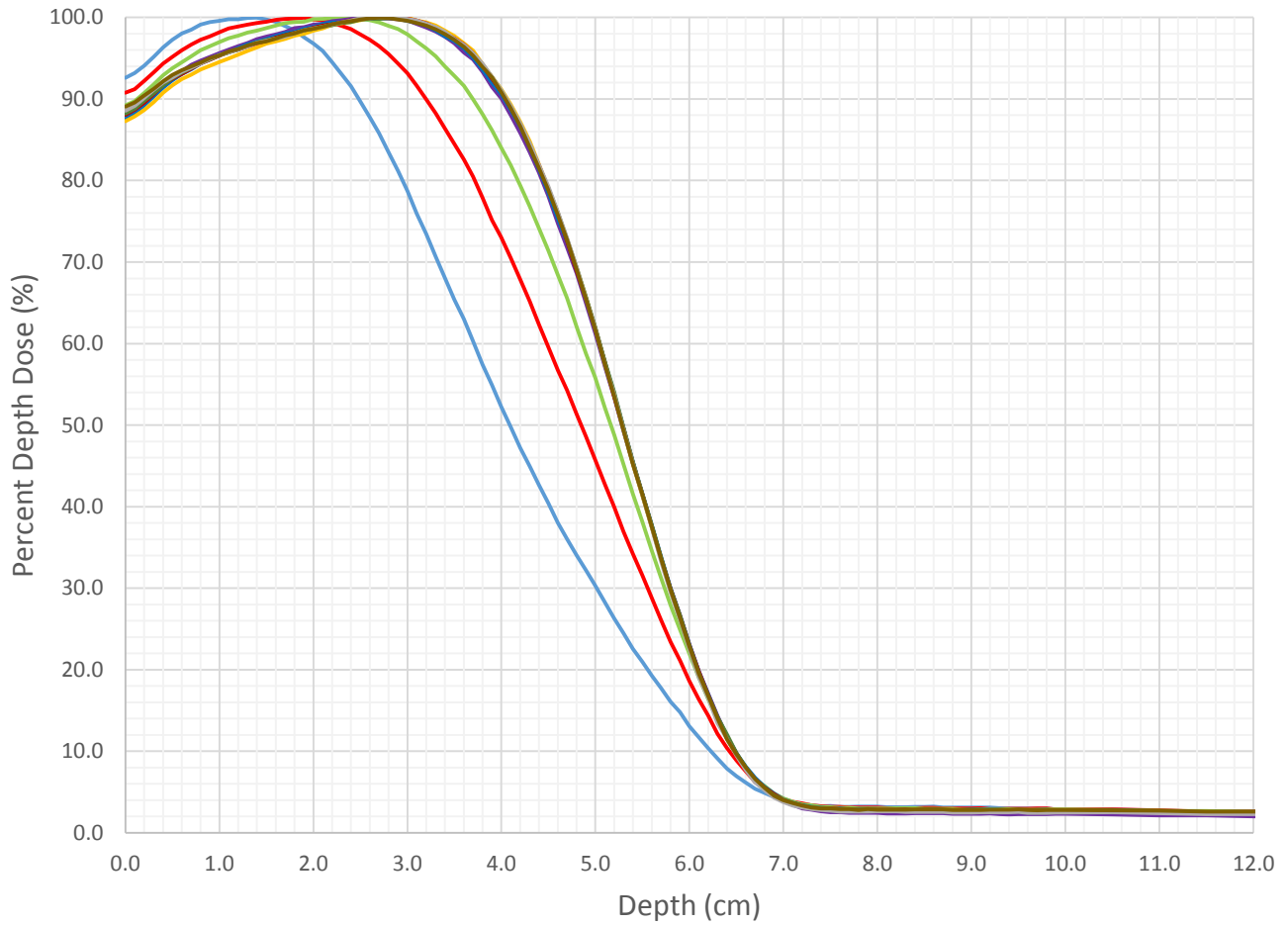
**Electron Depth Dose Table for Fixed Cone**

<b>Nominal Energy (MeV)</b>	<b>13</b>										
<b>SSD (cm)</b>	<b>100</b>										
<b>E<sub>p,o</sub> (MeV)</b>	<b>13.1</b>										
<b><math>\sigma_{\theta_z}</math> (radians)</b>	<b>0.038</b>										
<b>L<sub>o,eff</sub> (cm)</b>	<b>7</b>										
<b># Field Sizes</b>	<b>10</b>										
<b># Depths</b>	<b>122</b>										
<b>Field Size (cm)</b>		<b>2.2</b>	<b>3.2</b>	<b>4.4</b>	<b>6.2</b>	<b>6.4</b>	<b>8.6</b>	<b>10.6</b>	<b>14.8</b>	<b>21.2</b>	<b>26.4</b>
<b>Depth (cm)</b>		<b>Percent Depth Dose</b>									
0.0		92.6	90.8	89.2	88.5	87.7	87.3	88.1	88.2	88.6	89.1
0.1		93.2	91.2	89.7	88.9	88.3	87.9	88.7	88.8	89.1	89.6
0.2		94.1	92.2	90.7	89.6	89.2	88.6	89.5	89.8	90.1	90.4
0.3		95.1	93.2	91.8	90.7	90.3	89.6	90.6	90.7	91.1	91.2
0.4		96.3	94.4	92.9	91.8	91.4	90.8	91.7	91.7	92.0	92.2
0.5		97.3	95.2	93.8	92.7	92.3	91.7	92.5	92.6	92.6	92.9
0.6		98.0	96.0	94.5	93.4	93.1	92.5	93.1	93.2	93.3	93.5
0.7		98.5	96.7	95.2	94.2	93.7	93.0	93.7	93.8	93.8	94.0
0.8		99.1	97.2	96.0	94.7	94.4	93.6	94.3	94.4	94.4	94.4
0.9		99.4	97.7	96.5	95.2	94.9	94.1	94.8	94.8	94.9	95.0
1.0		99.6	98.2	97.0	95.6	95.4	94.5	95.3	95.3	95.4	95.4
1.1		99.8	98.7	97.5	96.0	95.7	95.0	95.8	95.7	95.7	95.8
1.2		99.8	98.9	97.8	96.5	96.3	95.4	96.1	96.1	96.1	96.1
1.3		99.9	99.1	98.2	96.9	96.7	95.9	96.5	96.5	96.4	96.5
1.4		100.0	99.3	98.4	97.3	97.0	96.3	96.8	96.9	96.9	96.9
1.5		99.7	99.5	98.7	97.6	97.3	96.8	97.1	97.2	97.1	97.1
1.6		99.5	99.7	99.0	97.9	97.7	97.1	97.5	97.4	97.4	97.4
1.7		98.9	99.8	99.3	98.2	98.1	97.4	97.8	97.8	97.6	97.8
1.8		98.4	99.9	99.4	98.7	98.2	97.8	98.1	98.1	98.0	98.0
1.9		97.6	100.0	99.5	98.8	98.6	98.0	98.4	98.4	98.4	98.4
2.0		96.8	99.7	99.8	99.1	98.8	98.4	98.7	98.6	98.6	98.6
2.1		95.9	99.7	99.8	99.2	99.2	98.7	99.0	98.9	98.9	98.9
2.2		94.5	99.3	99.9	99.5	99.4	99.1	99.1	99.0	99.1	99.2
2.3		93.0	99.0	100.0	99.7	99.4	99.3	99.4	99.3	99.4	99.4
2.4		91.6	98.6	100.0	99.8	99.7	99.4	99.7	99.4	99.6	99.5
2.5		89.7	97.9	99.8	100.0	99.8	99.6	99.8	99.7	99.9	99.7
2.6		87.8	97.3	99.7	99.9	99.8	99.9	99.9	99.8	99.9	99.9
2.7		85.8	96.5	99.4	99.9	100.0	100.0	100.0	99.8	100.0	100.0
2.8		83.5	95.5	99.0	99.9	100.0	99.9	100.0	99.9	99.9	99.9

2.9		81.2	94.3	98.6	99.8	99.8	100.0	99.9	100.0	100.0	99.8
3.0		78.7	93.1	97.9	99.6	99.6	100.0	99.9	99.7	99.8	99.6
3.1		76.0	91.6	97.1	99.2	99.3	99.6	99.6	99.5	99.6	99.3
3.2		73.5	90.0	96.2	98.8	99.0	99.4	99.3	99.2	99.3	99.0
3.3		70.7	88.3	95.2	98.3	98.4	99.0	98.7	98.7	98.8	98.5
3.4		68.1	86.4	94.0	97.7	97.7	98.4	98.1	98.1	98.2	98.0
3.5		65.4	84.5	92.8	96.8	97.1	97.7	97.4	97.3	97.4	97.3
3.6		63.0	82.6	91.6	95.7	96.2	96.8	96.7	96.5	96.6	96.4
3.7		60.3	80.5	90.0	94.8	95.0	95.9	95.6	95.5	95.6	95.3
3.8		57.4	77.9	88.1	93.3	93.6	94.3	94.1	94.1	94.3	93.9
3.9		54.9	75.1	86.1	91.5	92.0	92.7	92.5	92.7	92.7	92.6
4.0		52.2	73.0	84.0	90.1	90.6	91.2	90.9	91.1	91.1	90.9
4.1		49.8	70.5	81.9	88.0	88.6	89.3	88.9	89.1	89.1	88.9
4.2		47.2	67.9	79.4	85.8	86.6	87.2	86.8	86.9	87.0	86.7
4.3		45.0	65.2	76.8	83.5	84.1	84.8	84.3	84.4	84.6	84.1
4.4		42.7	62.3	74.2	81.0	81.4	82.0	81.9	81.8	81.9	81.5
4.5		40.4	59.6	71.4	78.1	78.5	79.1	79.0	79.1	79.3	78.8
4.6		38.0	56.7	68.4	74.7	75.3	76.0	76.0	76.1	76.1	75.8
4.7		36.0	54.3	65.6	71.8	72.5	72.8	72.6	72.8	73.0	72.7
4.8		34.1	51.4	62.1	68.6	69.1	69.3	68.9	69.4	69.4	69.1
4.9		32.2	48.6	58.7	64.9	65.6	65.7	65.5	65.7	65.5	65.4
5.0		30.3	45.7	55.8	61.3	61.8	61.9	61.9	62.0	61.9	61.7
5.1		28.3	42.8	52.2	57.2	57.8	57.7	57.8	57.8	57.5	57.5
5.2		26.3	39.9	48.8	53.4	53.8	53.6	53.5	54.0	53.8	53.5
5.3		24.5	37.0	45.2	49.3	49.7	49.5	49.6	49.7	49.5	49.4
5.4		22.6	34.2	41.5	45.3	45.5	45.2	45.4	45.5	45.3	45.2
5.5		21.0	31.6	38.1	41.5	41.5	41.3	41.5	41.6	41.4	41.5
5.6		19.2	28.8	34.5	37.6	37.7	37.4	37.5	37.7	37.3	37.5
5.7		17.7	26.1	31.2	33.6	33.9	33.5	33.7	33.8	33.3	33.6
5.8		16.1	23.4	27.9	30.0	30.0	29.7	29.9	29.9	29.5	29.8
5.9		14.8	21.1	24.9	26.7	26.6	26.4	26.6	26.6	26.1	26.3
6.0		13.1	18.6	22.0	23.2	23.1	22.8	23.0	23.0	22.6	22.9
6.1		11.7	16.4	19.1	19.8	19.8	19.6	19.8	19.6	19.1	19.5
6.2		10.4	14.4	16.4	17.0	17.0	16.7	16.8	16.8	16.5	16.8
6.3		9.1	12.2	13.9	14.4	14.2	14.0	14.2	14.2	13.5	14.0
6.4		7.9	10.4	11.6	11.8	11.8	11.5	11.7	12.1	11.5	11.5
6.5		7.0	8.9	9.7	9.8	9.7	9.6	9.7	9.8	9.5	9.6
6.6		6.2	7.6	8.1	7.9	8.1	7.9	8.0	8.1	7.7	8.0
6.7		5.4	6.3	6.6	6.5	6.7	6.4	6.6	6.5	6.2	6.6
6.8		4.9	5.5	5.7	5.3	5.6	5.4	5.5	5.5	5.2	5.5
6.9		4.4	4.7	4.8	4.4	4.8	4.7	4.7	4.6	4.3	4.6
7.0		4.0	4.2	4.2	3.8	4.1	4.1	4.0	4.0	3.8	4.0
7.1		3.7	3.8	3.8	3.4	3.7	3.6	3.6	3.7	3.3	3.6
7.2		3.5	3.6	3.5	3.0	3.4	3.3	3.3	3.3	3.1	3.3
7.3		3.4	3.4	3.4	2.8	3.2	3.1	3.1	3.1	2.9	3.1
7.4		3.3	3.3	3.2	2.6	3.1	3.0	3.0	3.0	2.8	3.0
7.5		3.3	3.2	3.2	2.5	3.0	3.0	3.0	3.0	2.7	3.0



# Elekta Infinity: 13 MeV Electrons Central Axis Depth Dose @ 100 cm SSD



Field Size (cm)    2.2    3.2    4.4    6.2    6.4    8.6    10.6    14.8    21.2    26.4

**Elekta Infinity: 16 MeV Electrons**

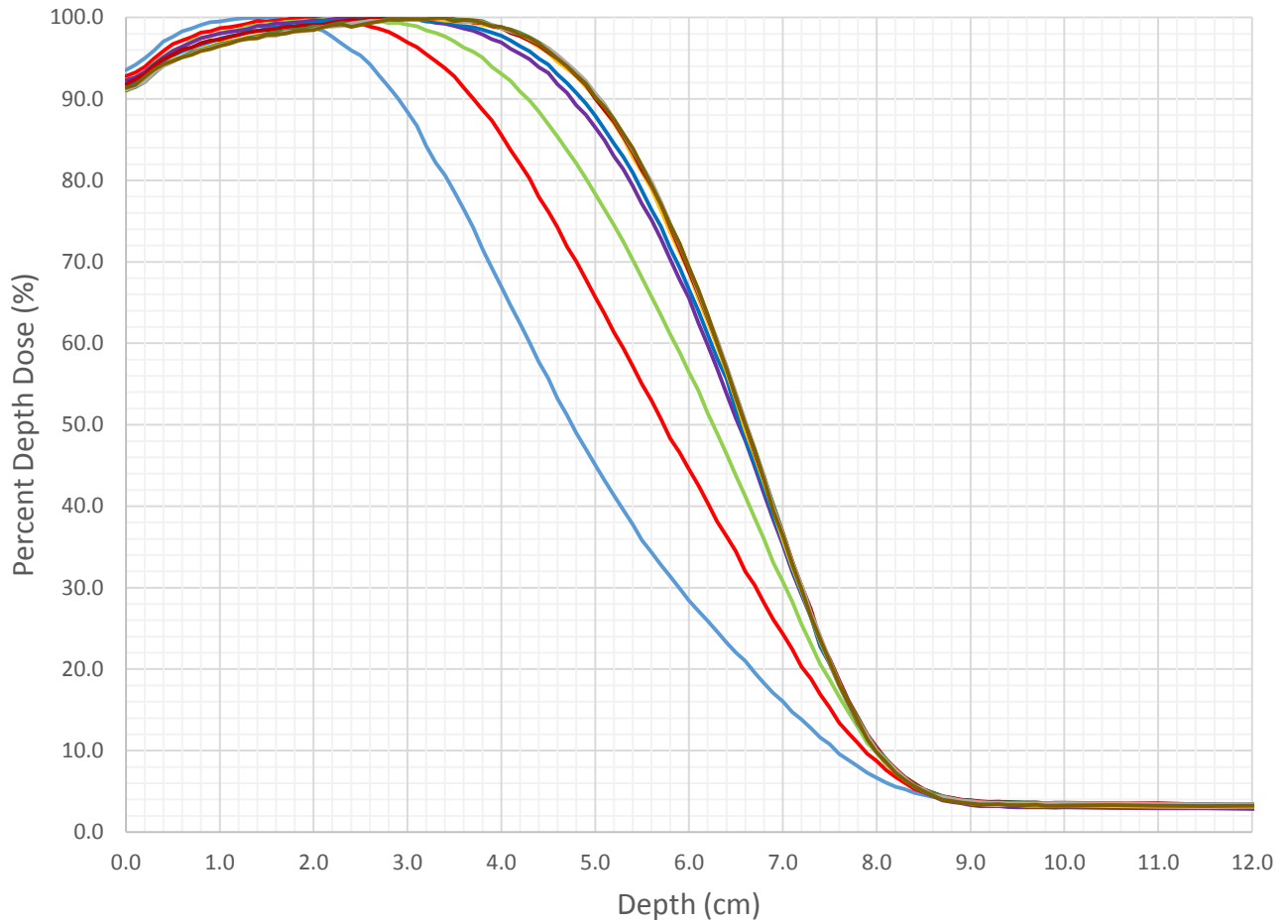
**Electron Depth Dose Table for Fixed Cone**

<b>Nominal Energy (MeV)</b>	<b>16</b>										
<b>SSD (cm)</b>	<b>100</b>										
<b>E<sub>p,o</sub> (MeV)</b>	<b>16</b>										
<b><math>\sigma_{\theta_z}</math> (radians)</b>	<b>0.03</b>										
<b>L<sub>o,eff</sub> (cm)</b>	<b>7</b>										
<b># Field Sizes</b>	<b>10</b>										
<b># Depths</b>	<b>122</b>										
<b>Field Size (cm)</b>		<b>2.2</b>	<b>3.2</b>	<b>4.4</b>	<b>6.2</b>	<b>6.4</b>	<b>8.6</b>	<b>10.6</b>	<b>14.8</b>	<b>21.2</b>	<b>26.4</b>
<b>Depth (cm)</b>		<b>Percent Depth Dose</b>									
0.0		93.6	92.8	91.9	92.3	91.4	90.9	91.8	91.1	91.1	91.4
0.1		94.2	93.2	92.5	92.7	92.0	91.7	92.4	91.5	91.6	91.7
0.2		95.0	93.9	93.3	93.3	92.8	92.3	93.1	92.1	92.1	92.7
0.3		95.9	94.9	94.4	94.3	93.8	93.2	94.1	93.1	93.2	93.6
0.4		97.0	95.9	95.2	95.1	94.6	94.2	94.9	94.1	94.1	94.2
0.5		97.6	96.7	95.9	95.9	95.3	94.9	95.5	94.6	94.6	94.7
0.6		98.3	97.2	96.4	96.4	95.8	95.2	96.1	95.2	95.1	95.1
0.7		98.6	97.6	97.2	96.9	96.3	95.7	96.3	95.8	95.5	95.4
0.8		99.1	98.1	97.5	97.5	96.7	96.1	96.9	96.1	96.0	95.9
0.9		99.4	98.3	97.7	97.7	97.0	96.5	97.2	96.3	96.2	96.1
1.0		99.5	98.7	98.1	98.0	97.4	96.9	97.3	96.7	96.6	96.5
1.1		99.7	98.8	98.3	98.2	97.7	97.1	97.6	96.9	96.8	96.8
1.2		99.9	99.0	98.5	98.4	97.9	97.3	97.9	97.2	97.2	97.2
1.3		99.9	99.2	98.9	98.6	98.3	97.6	98.1	97.5	97.3	97.4
1.4		100.0	99.6	99.0	98.9	98.4	97.8	98.3	97.7	97.5	97.4
1.5		100.0	99.5	99.2	99.0	98.6	97.8	98.5	98.0	97.7	97.9
1.6		99.9	99.6	99.3	99.3	98.8	98.3	98.6	98.2	97.7	97.9
1.7		99.8	99.7	99.5	99.3	98.9	98.2	98.8	98.4	98.2	98.0
1.8		99.5	100.0	99.5	99.4	98.9	98.5	98.9	98.5	98.3	98.3
1.9		99.0	99.9	99.6	99.5	99.2	98.5	99.1	98.6	98.3	98.4
2.0		98.7	99.8	99.6	99.7	99.3	98.8	99.1	98.9	98.5	98.5
2.1		98.4	99.8	99.8	99.6	99.6	98.8	99.1	98.8	98.8	98.8
2.2		97.6	99.8	100.0	99.8	99.6	99.0	99.4	99.1	98.9	99.1
2.3		96.8	99.6	99.8	99.9	99.5	99.2	99.5	99.3	99.0	99.2
2.4		96.0	99.5	99.7	99.9	99.7	99.3	99.7	99.3	99.3	98.8
2.5		95.4	99.3	99.8	100.0	99.8	99.6	99.6	99.5	99.4	99.1
2.6		94.3	98.9	99.9	99.8	99.8	99.5	99.8	99.5	99.6	99.3
2.7		92.9	98.6	99.6	100.0	99.8	99.6	99.8	99.5	99.6	99.5
2.8		91.5	98.2	99.3	99.9	99.9	99.7	99.9	99.9	99.6	99.7

2.9		90.1	97.6	99.4	99.8	99.8	99.8	99.9	99.9	99.7	99.7
3.0		88.4	96.9	99.1	99.8	99.8	99.7	99.9	99.8	99.8	99.8
3.1		86.7	96.3	98.9	99.8	99.8	99.7	99.9	99.9	99.8	99.8
3.2		84.2	95.5	98.4	99.6	99.5	99.9	99.9	99.9	99.8	99.8
3.3		82.2	94.6	98.1	99.4	99.6	99.8	99.9	100.0	100.0	100.0
3.4		80.6	93.8	97.7	99.2	99.4	99.6	100.0	100.0	99.9	99.9
3.5		78.6	92.8	97.1	98.9	99.2	99.6	99.8	99.7	99.5	99.5
3.6		76.5	91.4	96.3	98.6	98.9	99.6	99.7	99.7	99.3	99.7
3.7		74.2	90.0	95.8	98.4	98.8	99.4	99.4	99.6	99.5	99.6
3.8		71.6	88.6	95.1	97.9	98.5	99.1	99.4	99.6	99.4	99.3
3.9		69.2	87.3	94.0	97.3	98.1	98.9	98.9	99.1	99.1	99.0
4.0		67.0	85.6	93.1	96.9	97.7	98.6	98.7	98.7	98.7	98.9
4.1		64.6	83.7	92.2	96.2	97.2	98.3	98.1	98.5	98.3	98.5
4.2		62.4	82.0	90.9	95.5	96.5	97.8	97.7	98.1	97.9	97.9
4.3		60.1	80.2	89.8	94.9	95.8	97.1	97.2	97.6	97.4	97.5
4.4		57.7	78.0	88.4	93.9	94.9	96.4	96.6	96.9	96.8	96.8
4.5		55.7	76.2	86.9	93.2	94.2	95.7	95.7	96.2	96.2	95.9
4.6		53.2	74.2	85.4	91.8	93.0	94.5	94.9	95.1	95.4	95.0
4.7		51.2	71.8	83.7	90.8	92.0	93.7	94.0	94.2	94.4	94.0
4.8		49.0	70.0	82.1	89.2	90.7	92.8	92.8	93.2	93.3	92.9
4.9		47.0	67.9	80.3	88.0	89.5	91.5	91.8	92.0	92.2	91.9
5.0		45.1	65.7	78.3	86.5	87.9	90.2	90.1	90.6	90.7	90.2
5.1		43.2	63.7	76.4	84.9	86.3	88.6	88.6	89.3	89.2	89.0
5.2		41.3	61.4	74.5	83.0	84.5	87.0	87.2	87.5	87.5	87.5
5.3		39.6	59.4	72.5	81.4	82.9	85.2	85.4	85.7	85.7	85.7
5.4		37.8	57.2	70.3	79.3	81.0	82.9	83.5	83.7	83.8	84.0
5.5		35.8	55.0	68.0	77.1	78.8	81.0	81.3	81.8	81.8	81.7
5.6		34.4	53.0	65.7	75.2	76.4	79.0	79.4	79.7	79.8	79.4
5.7		32.8	50.7	63.4	72.8	74.3	76.3	77.2	77.2	77.3	77.0
5.8		31.4	48.3	61.1	70.3	71.6	73.7	74.3	74.6	74.6	74.5
5.9		29.9	46.6	58.9	67.8	69.3	71.1	71.6	72.2	72.1	72.2
6.0		28.4	44.5	56.5	65.6	66.6	68.7	68.9	69.3	69.4	69.3
6.1		27.2	42.6	54.2	62.5	64.0	65.5	66.1	66.5	66.3	66.5
6.2		25.9	40.4	51.5	59.8	61.1	62.7	63.2	63.4	63.5	63.5
6.3		24.6	38.1	49.0	56.9	58.1	59.7	60.1	60.4	60.4	60.0
6.4		23.2	36.3	46.4	53.8	55.6	56.5	57.0	57.0	57.1	56.8
6.5		22.1	34.5	43.8	50.8	51.8	53.1	53.4	53.8	53.8	53.4
6.6		21.0	32.0	41.2	48.0	48.2	49.3	50.1	50.3	50.3	50.0
6.7		19.6	30.3	38.6	44.9	45.2	46.3	46.6	47.1	46.8	46.9
6.8		18.3	28.1	36.0	41.5	42.2	42.9	43.4	43.7	43.8	43.3
6.9		17.0	26.1	33.1	38.4	38.8	39.5	40.1	40.2	39.8	39.4
7.0		16.1	24.4	30.8	35.3	35.6	35.9	36.8	36.8	36.7	36.4
7.1		14.7	22.4	28.3	32.0	32.3	32.6	33.2	33.1	33.1	32.9
7.2		13.8	20.3	25.5	29.2	29.3	29.6	30.2	30.1	30.3	29.8
7.3		12.7	18.8	23.1	26.5	26.4	26.4	27.3	26.5	26.8	26.4
7.4		11.6	16.9	20.6	23.6	22.8	23.4	23.6	23.7	24.1	23.6
7.5		10.8	15.3	18.7	20.7	20.6	20.8	21.2	21.0	21.0	20.9



# Elekta Infinity: 16 MeV Electrons Central Axis Depth Dose @ 100 cm SSD



Field Size (cm)    2.2    3.2    4.4    6.2    6.4    8.6    10.6    14.8    21.2    26.4

**Elekta Infinity: 20 MeV Electrons**

**Electron Depth Dose Table for Fixed Cone**

<b>Nominal Energy (MeV)</b>	<b>20</b>										
<b>SSD (cm)</b>	<b>100</b>										
<b>E<sub>p,o</sub> (MeV)</b>	<b>20.1</b>										
<b><math>\sigma_{\theta_z}</math> (radians)</b>	<b>0.025</b>										
<b>L<sub>o,eff</sub> (cm)</b>	<b>7</b>										
<b># Field Sizes</b>	<b>10</b>										
<b># Depths</b>	<b>122</b>										
<b>Field Size (cm)</b>		<b>2.2</b>	<b>3.2</b>	<b>4.4</b>	<b>6.2</b>	<b>6.4</b>	<b>8.6</b>	<b>10.6</b>	<b>14.8</b>	<b>21.2</b>	<b>26.4</b>
<b>Depth (cm)</b>		<b>Percent Depth Dose</b>									
0.0		93.8	93.2	93.3	94.0	93.4	93.5	93.9	92.8	92.7	93.0
0.1		94.1	94.0	93.7	94.2	93.8	94.0	94.3	93.3	93.2	93.5
0.2		95.0	94.6	94.4	94.7	94.4	94.7	94.8	93.9	93.8	94.1
0.3		96.2	95.7	95.4	95.7	95.5	95.5	95.9	94.8	94.6	95.2
0.4		96.9	96.8	96.3	96.6	96.2	96.4	96.7	95.4	95.8	95.9
0.5		97.8	97.3	97.1	97.3	97.0	97.0	97.3	96.2	96.2	96.6
0.6		98.2	97.9	97.8	97.8	97.5	97.6	97.9	96.8	96.5	97.0
0.7		98.9	98.3	98.1	98.4	97.8	97.9	98.3	97.3	97.1	97.7
0.8		99.1	98.8	98.5	98.8	98.3	98.3	98.6	97.8	97.4	97.9
0.9		99.4	99.0	98.8	98.9	98.6	98.5	98.7	97.8	97.7	98.5
1.0		99.7	99.2	99.0	99.1	98.6	98.7	98.9	98.1	98.2	98.6
1.1		99.8	99.3	99.3	99.3	99.0	98.8	99.2	98.4	98.3	98.7
1.2		99.9	99.6	99.5	99.4	99.1	98.9	99.3	98.7	98.3	99.3
1.3		100.0	99.6	99.5	99.6	99.2	99.3	99.3	98.6	98.6	99.2
1.4		99.9	99.6	99.8	99.7	99.4	99.3	99.7	98.8	98.8	99.3
1.5		100.0	99.7	99.8	99.7	99.6	99.4	99.7	99.2	99.0	99.6
1.6		99.8	99.9	100.0	99.8	99.5	99.4	99.8	99.3	99.1	99.5
1.7		99.9	99.8	99.9	99.9	99.6	99.4	99.9	99.5	99.2	99.8
1.8		99.9	100.0	99.9	100.0	99.8	99.5	99.9	99.6	99.5	99.6
1.9		99.7	100.0	100.0	100.0	99.8	99.8	99.8	99.4	99.4	99.6
2.0		99.4	99.9	100.0	99.9	100.0	99.7	99.8	99.6	99.6	99.6
2.1		99.1	99.8	99.9	100.0	100.0	99.7	99.9	99.6	99.6	99.8
2.2		98.6	99.7	100.0	99.8	99.9	99.8	99.8	99.7	99.8	99.9
2.3		98.3	99.7	99.9	99.7	99.9	99.9	100.0	99.8	99.9	99.5
2.4		97.9	99.6	99.9	99.7	100.0	100.0	100.0	100.0	99.7	99.7
2.5		97.4	99.4	99.8	99.7	100.0	99.8	99.8	99.8	99.8	99.9
2.6		96.9	99.4	99.7	99.5	99.7	99.7	99.9	99.9	100.0	99.7
2.7		96.1	98.9	99.6	99.6	99.7	99.8	99.8	99.7	99.8	99.7
2.8		95.5	98.7	99.6	99.6	99.7	99.6	99.7	99.9	99.8	99.7

2.9		94.6	98.4	99.2	99.4	99.4	99.7	99.6	99.6	99.8	99.9
3.0		93.8	98.2	99.2	99.2	99.5	99.7	99.7	99.7	99.7	99.8
3.1		92.6	97.8	98.9	99.0	99.4	99.5	99.5	99.6	99.6	99.8
3.2		91.5	97.3	98.7	98.8	99.3	99.3	99.4	99.6	99.4	99.9
3.3		90.4	96.9	98.5	98.7	99.1	99.4	99.3	99.4	99.5	100.0
3.4		89.2	96.4	98.1	98.5	98.8	99.2	99.1	99.4	99.5	99.8
3.5		87.7	95.7	97.9	98.1	98.6	99.0	99.0	99.1	99.3	99.8
3.6		86.2	95.3	97.5	98.0	98.5	98.9	98.8	99.1	99.2	99.8
3.7		84.7	94.6	97.2	97.7	98.2	98.7	98.7	99.1	99.0	99.6
3.8		83.0	93.8	96.8	97.4	98.0	98.7	98.5	98.8	99.1	99.4
3.9		81.1	92.9	96.5	97.2	97.8	98.4	98.5	98.7	98.9	99.4
4.0		79.6	91.9	95.9	97.0	97.5	98.3	98.3	98.6	98.8	99.3
4.1		77.7	91.0	95.3	96.6	97.4	98.1	98.0	98.4	98.6	98.8
4.2		76.1	89.9	94.8	96.1	97.1	97.9	97.7	98.0	98.6	98.7
4.3		74.2	89.1	94.1	96.0	96.6	97.6	97.7	98.0	98.4	98.3
4.4		72.0	87.7	93.3	95.4	96.4	97.4	97.4	97.7	98.1	97.8
4.5		70.0	86.8	92.7	94.9	96.1	96.9	97.2	97.6	97.9	97.6
4.6		68.3	85.2	92.0	94.5	95.5	96.5	96.9	97.3	97.6	97.4
4.7		66.4	83.8	91.1	93.9	95.0	96.5	96.6	97.0	97.5	96.9
4.8		64.6	82.7	90.3	93.4	94.7	96.1	96.2	96.7	96.8	96.6
4.9		62.8	80.9	89.4	92.7	94.2	95.7	95.7	96.4	96.6	96.1
5.0		60.6	79.4	88.5	92.2	93.6	95.2	95.3	96.0	96.3	96.0
5.1		58.6	77.8	87.4	91.5	93.0	94.8	94.9	95.6	96.0	95.7
5.2		56.6	76.1	86.2	90.7	92.3	94.2	94.2	95.1	95.6	95.2
5.3		55.1	74.7	85.0	90.2	91.5	93.7	93.8	94.5	94.9	94.9
5.4		53.1	73.1	84.0	89.1	90.9	93.0	93.3	94.1	94.4	94.5
5.5		51.4	71.7	82.5	88.2	90.2	92.4	92.9	93.5	93.7	94.0
5.6		49.9	69.9	81.2	87.4	89.3	91.8	92.2	92.8	93.2	93.4
5.7		48.2	68.1	80.1	86.4	88.4	91.0	91.4	92.4	92.6	92.8
5.8		46.3	66.2	78.4	85.5	87.4	90.2	90.6	91.5	91.8	92.2
5.9		44.8	64.8	77.0	84.4	86.6	89.6	90.2	90.9	91.3	91.4
6.0		43.3	63.2	75.7	83.2	85.3	88.6	89.0	90.2	90.4	90.6
6.1		41.8	61.3	74.3	82.1	84.4	87.7	88.2	89.3	89.6	89.7
6.2		40.6	59.8	72.6	80.8	83.3	86.7	87.2	88.0	88.6	88.9
6.3		38.9	58.1	71.1	79.6	81.7	85.8	86.2	87.0	87.7	87.9
6.4		37.5	56.6	69.6	78.3	80.5	84.6	85.3	86.0	86.4	86.7
6.5		36.4	54.7	67.7	77.1	79.1	83.2	84.3	85.0	85.4	85.2
6.6		35.0	53.1	66.4	75.5	77.6	81.9	82.9	83.8	84.1	83.9
6.7		33.8	51.5	64.5	74.0	75.8	80.8	81.5	82.5	82.8	82.7
6.8		32.6	49.9	62.9	72.3	74.9	78.9	80.0	81.1	81.5	81.1
6.9		31.7	48.2	61.3	70.8	73.7	77.6	78.6	79.4	80.1	79.6
7.0		30.5	46.2	59.4	69.3	72.1	75.9	77.0	77.9	78.4	77.7
7.1		29.3	44.9	57.6	67.4	69.8	74.3	75.3	76.3	76.5	76.4
7.2		28.2	43.6	55.9	65.5	68.3	72.7	73.6	74.7	75.0	74.3
7.3		27.2	41.5	54.0	63.9	66.2	71.0	72.0	72.6	73.0	72.7
7.4		26.3	40.2	52.0	61.9	64.1	68.9	69.9	70.7	71.3	70.8
7.5		25.1	38.6	50.4	59.6	62.6	66.9	67.8	68.7	69.3	68.9

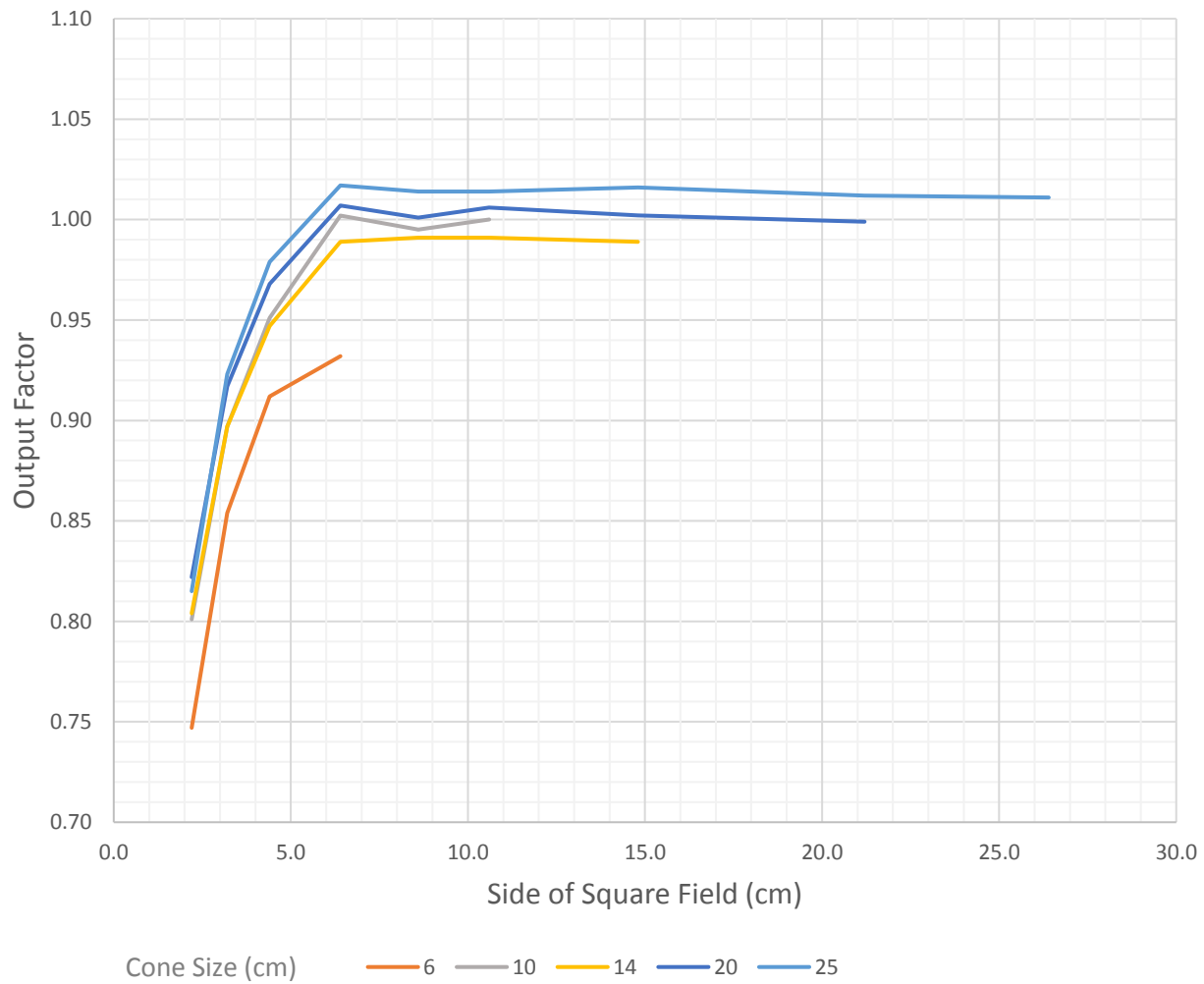


**Electron Beam Parameters for Elekta Infinity**

<b>Nominal SSD: 100 cm</b>							
<b>Field Size: 10X10 cm<sup>2</sup></b>							
<b>Nominal Energy (MeV)</b>	7	9	10	11	13	16	20
<b>E<sub>p,o</sub> (MeV)*</b>	7.5	9.0	10.1	11.4	13.1	16.0	20.1
<b><math>\bar{E}_o</math> (MeV)**</b>	6.7	8.2	9.6	11.0	12.7	15.8	19.9
<b>Surface Dose (%)</b>	81.4	85.5	84.4	86.6	89.1	91.4	93.0
<b>Depth to Proximal 90% (cm)</b>							
<b>Depth to 100% (cm)</b>	1.5	1.9	2.2	2.5	2.9	3.4	2.4
<b>Depth to Distal 90% (cm)</b>	2.1	2.6	3.0	3.5	4.1	5.1	6.0
<b>Depth to 80% (cm)</b>	2.3	2.9	3.3	3.9	4.5	5.6	6.9
<b>Depth to 50% (cm)</b>	2.8	3.4	4.0	4.6	5.3	6.6	8.3
<b>Depth to 20% (cm)</b>	3.3	4.0	4.6	5.2	6.1	7.5	9.5
<b>Depth to 10% (cm)</b>	3.5	4.3	4.9	5.5	6.5	8.0	10.2
<b>Range R<sub>p</sub> (cm)</b>	3.5	4.2	4.9	5.6	6.5	8.0	10.1
<b>X-ray Dose (%) (R<sub>p</sub>+2 cm)</b>	1.2	1.8	1.6	2.0	2.6	3.1	4.6
<b><math>\sigma_{\theta_{max}}</math> (radians)</b>	0.062	0.054	0.048	0.042	0.038	0.030	0.025
<b>L<sub>o,eff</sub> (cm)</b>	7						
<b>*E<sub>p,o</sub> (MeV) = 0.22 + 1.98 * R<sub>p</sub> (cm) + 0.0025 R<sub>p</sub><sup>2</sup> (cm)</b>							
<b>**<math>\bar{E}_o</math> (MeV) = 2.4 * R<sub>50</sub> (cm)</b>							

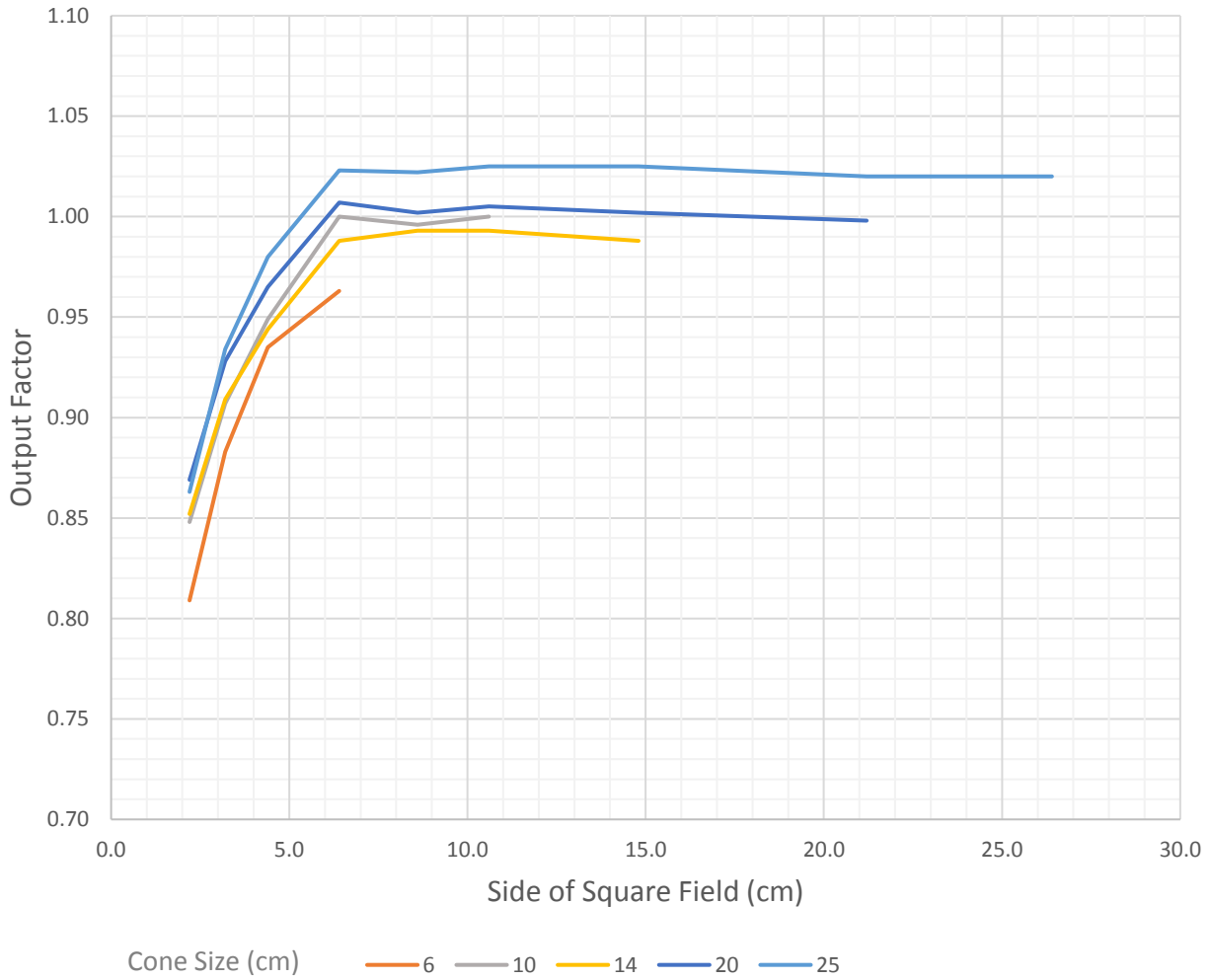


# Elekta Synergy: 7 MeV Electrons Output Factor vs Side of Square Field 100 cm SSD



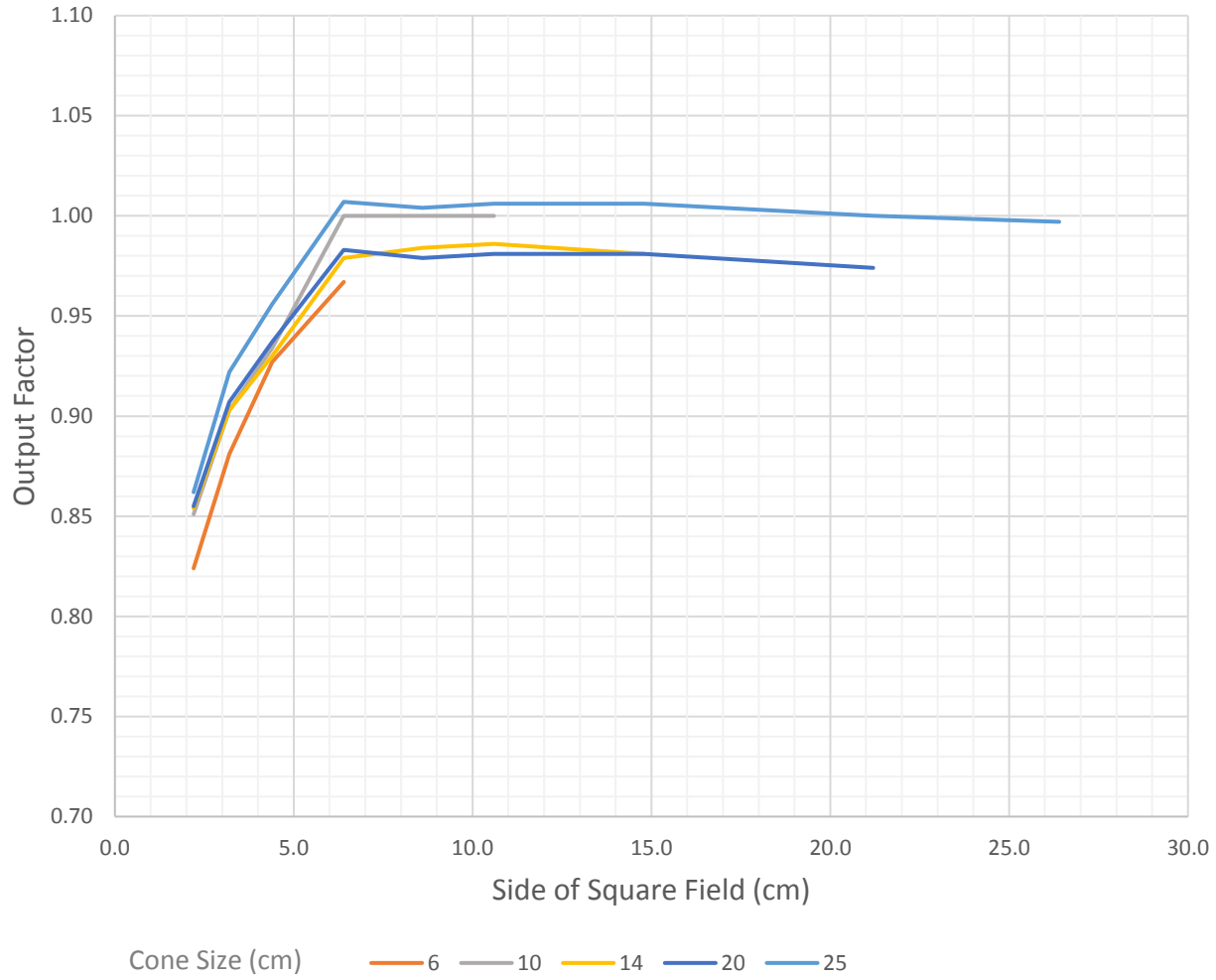


Elekta Infinity: 9 MeV Electrons  
Output Factor vs Side of Square Field  
100 cm SSD



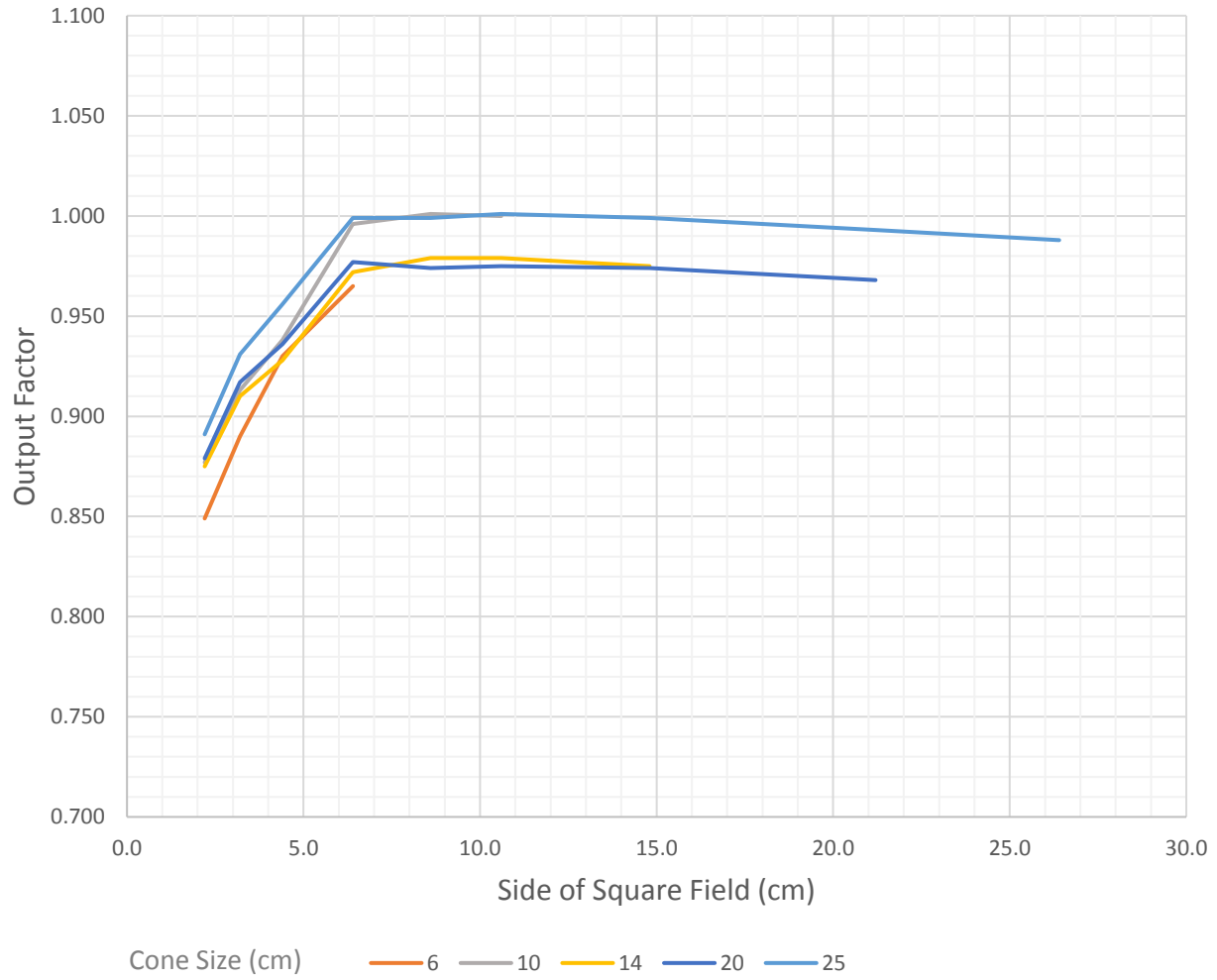


Elekta Infinity: 10 MeV Electrons  
Output Factor vs Side of Square Field  
100 cm SSD



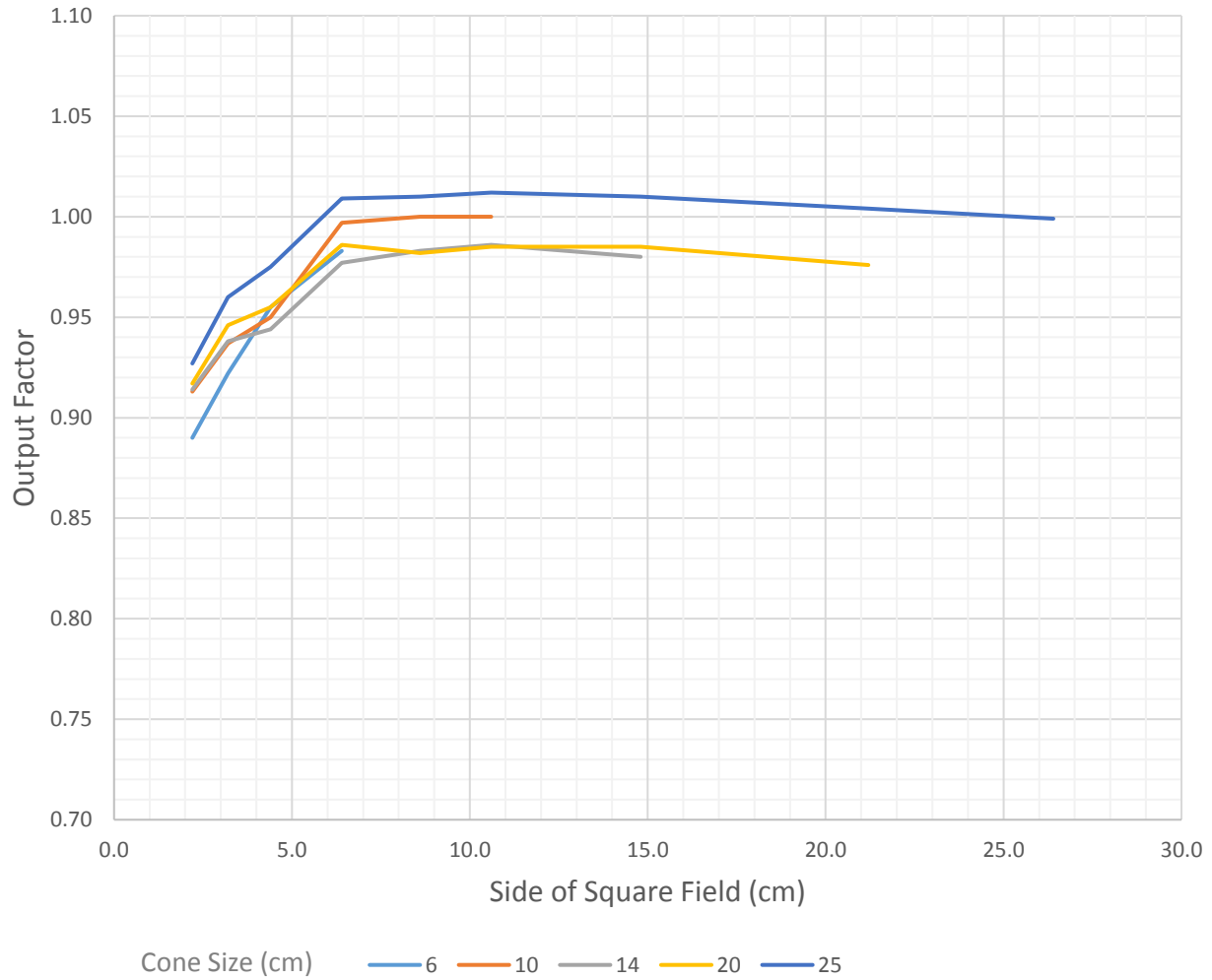


Elekta Infinity: 11 MeV Electrons  
Output Factor vs Side of Square Field  
100 cm SSD



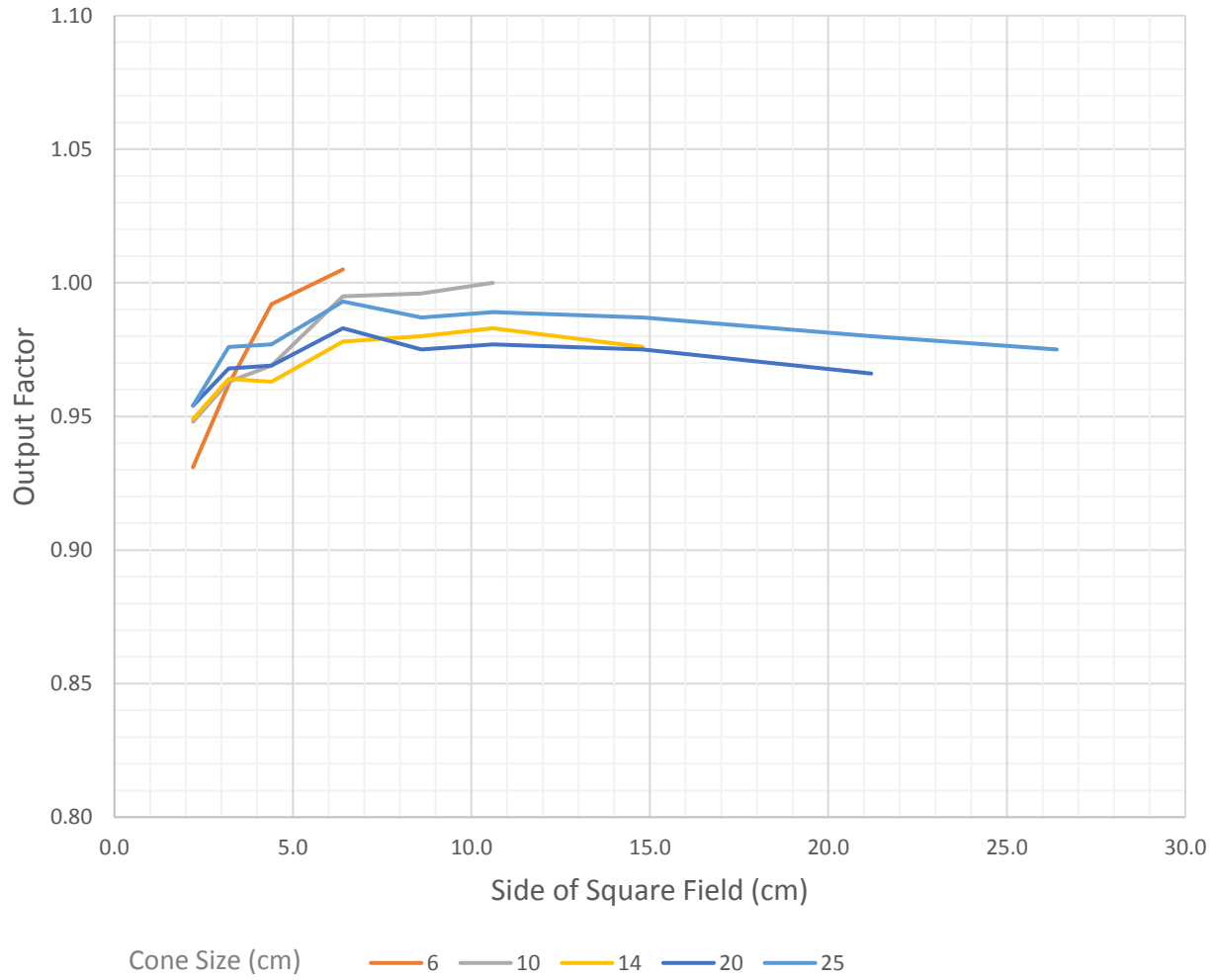


Elekta Infinity: 13 MeV Electrons  
Output Factor vs Side of Square Field  
100 cm SSD





Elekta Infinity: 16 MeV Electrons  
Output Factor vs Side of Square Field  
100 cm SSD





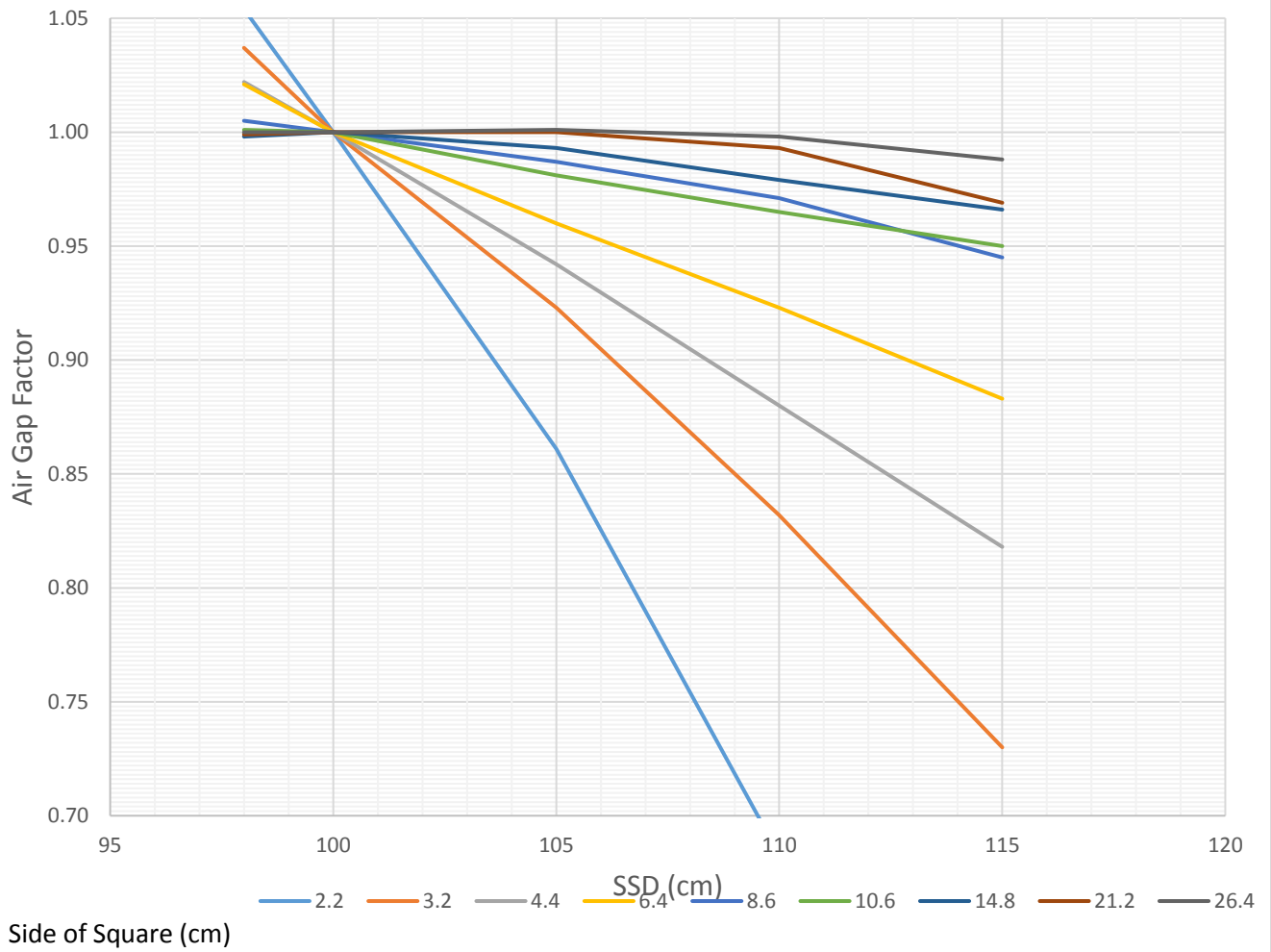
Elekta Infinity: 20 MeV Electrons  
Output Factor vs Side of Square Field  
100 cm SSD





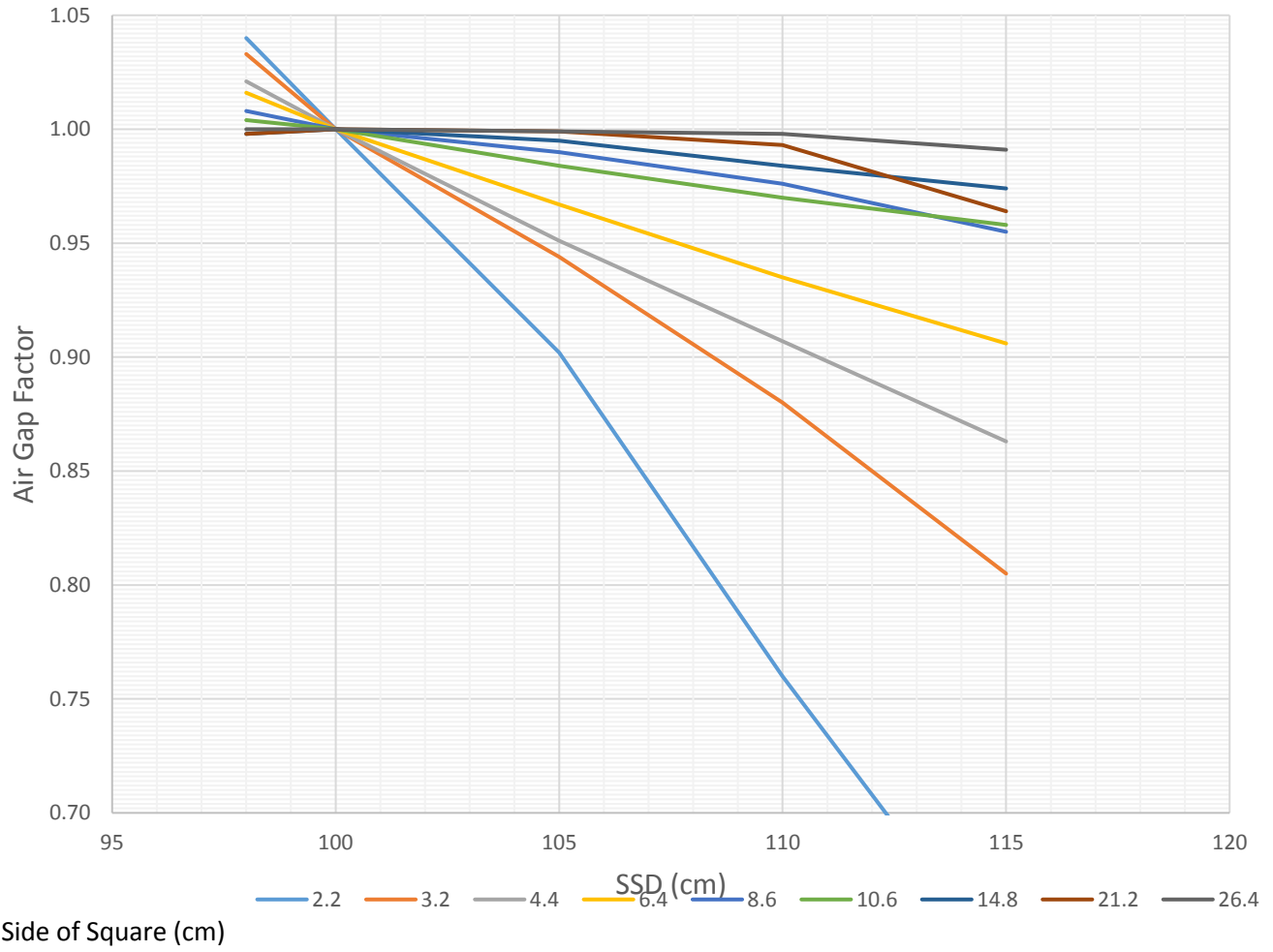
# Elekta Infinity: 7 MeV Electrons

## Air Gap Factor vs Field Size & SSD



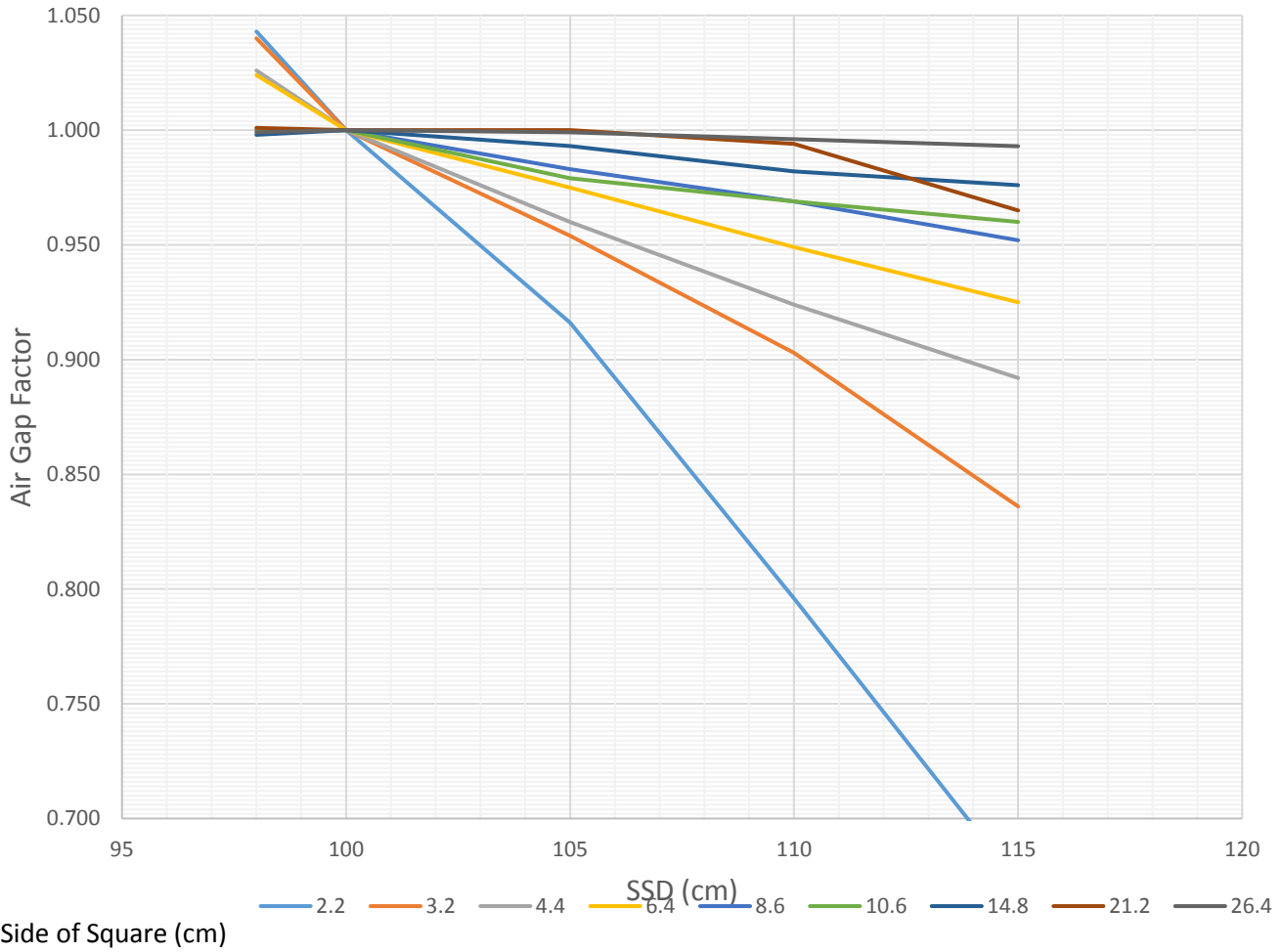


# Elekta Infinity: 9 MeV Electrons Air Gap Factor vs Field Size & SSD



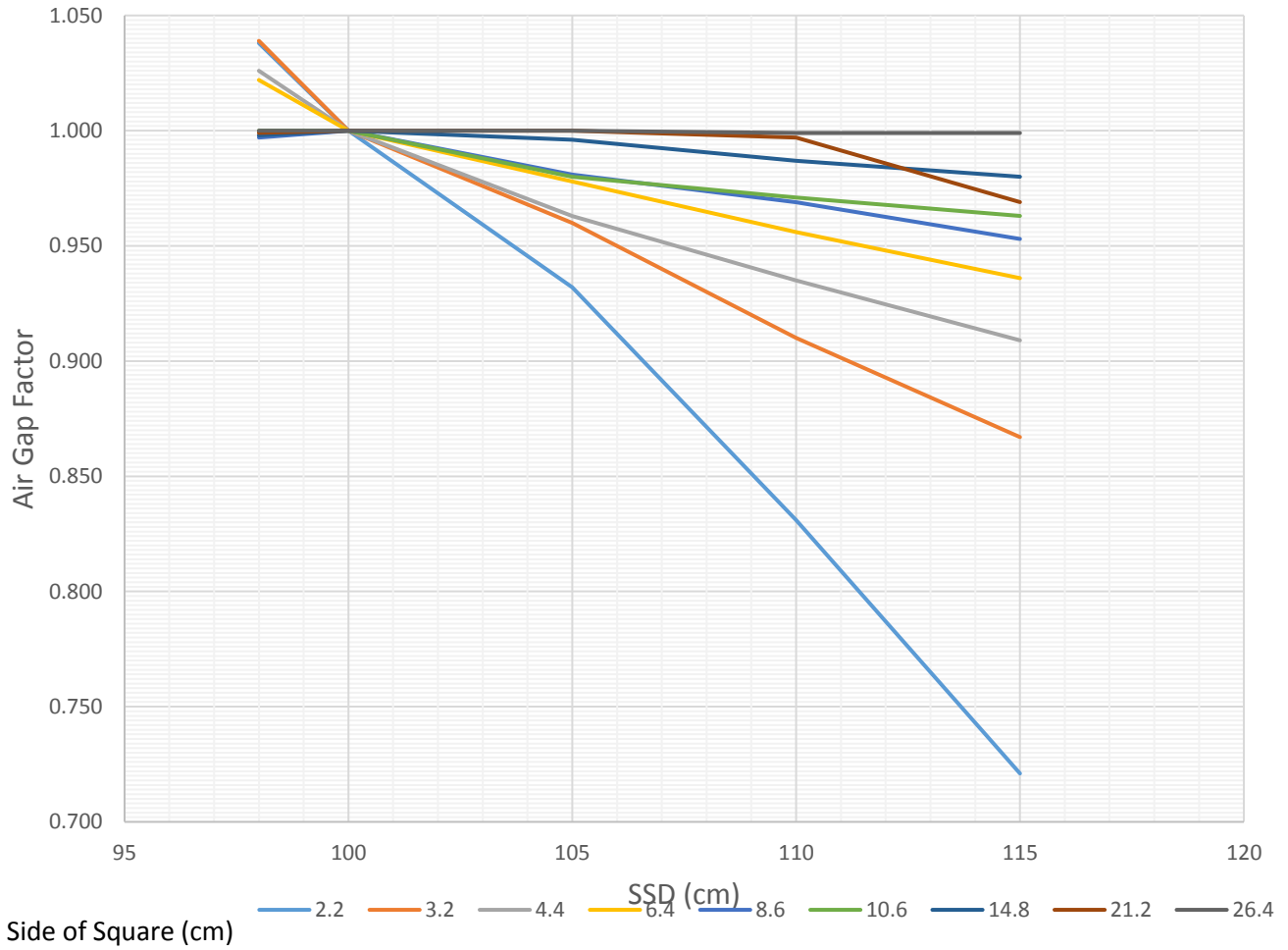


# Elekta Infinity: 10 MeV Electrons Air Gap Factor vs Field Size & SSD



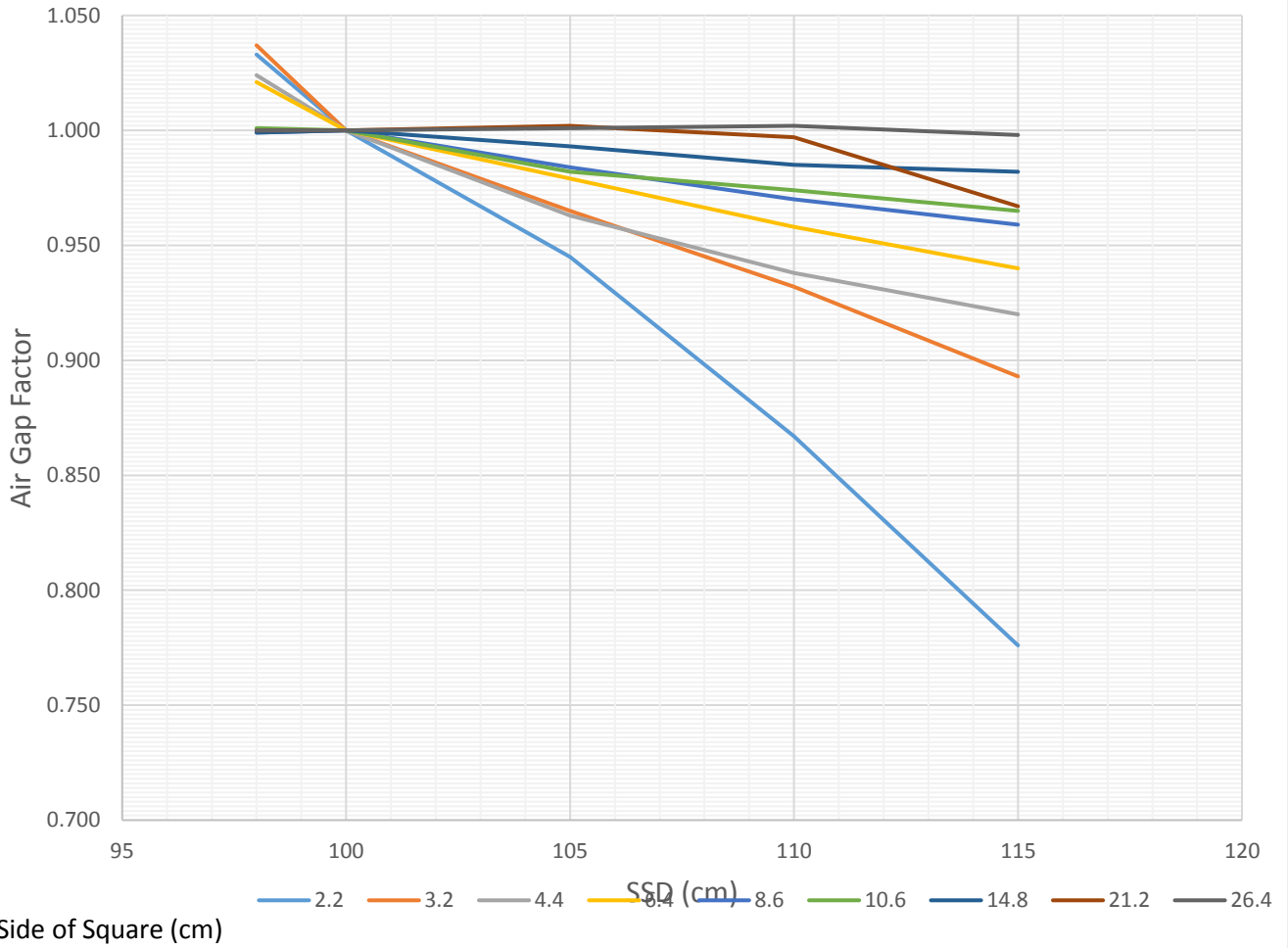


# Elekta Infinity: 11 MeV Electrons Air Gap Factor vs Field Size & SSD



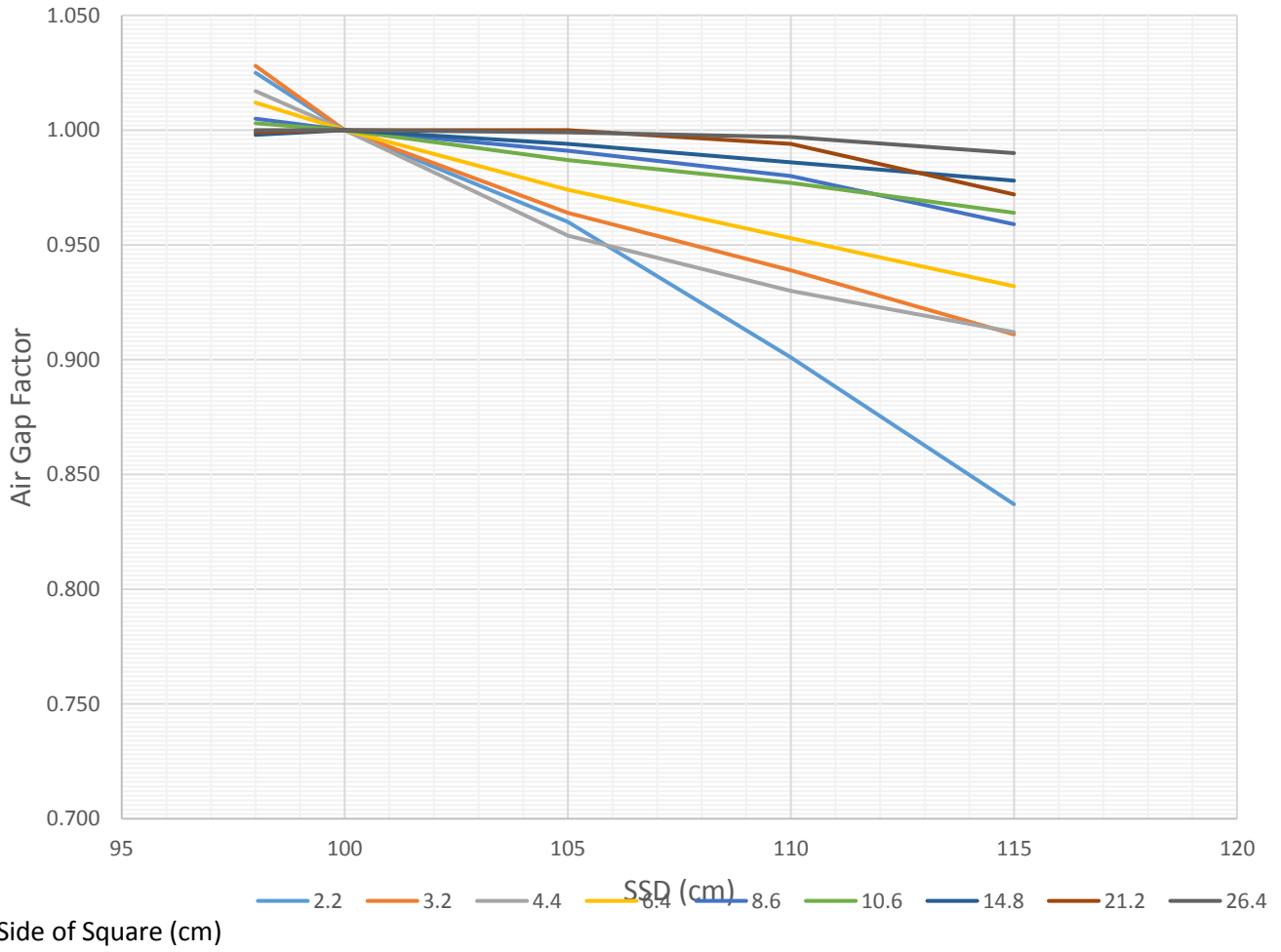


# Elekta Infinity: 13 MeV Electrons Air Gap Factor vs Field Size & SSD





# Elekta Infinity: 16 MeV Electrons Air Gap Factor vs Field Size & SSD





# Elekta Infinity: 20 MeV Electrons Air Gap Factor vs Field Size & SSD

